

1945



*Owls Nest*



[worldwartwoveterans.org/garland-texas](http://worldwartwoveterans.org/garland-texas)





Patsy Luna



worldwar2veterans.org/garland-texas

CHUC  
45



[worldwartwoveterans.org/garland-texas](http://worldwartwoveterans.org/garland-texas)



[worldwartwoveterans.org/garland-texas](http://worldwartwoveterans.org/garland-texas)



[worldwartwoveterans.org/garland-texas](http://worldwartwoveterans.org/garland-texas)





# OWLS NEST

1944 ★ 1945

[worldwartwoveterans.org/garland-texas](http://worldwartwoveterans.org/garland-texas)  
VOLUME V

PUBLISHED  
by the  
SENIOR CLASS  
of  
GARLAND HIGH SCHOOL

GARLAND

TEXAS



# Foreword



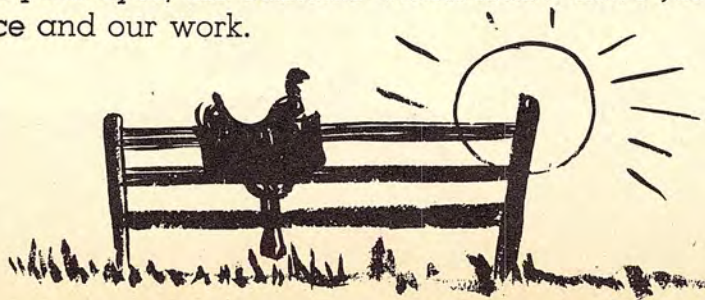
[worldwartwoveterans.org/garland-texas](http://worldwartwoveterans.org/garland-texas)

"READY FOR THE ROUNDUP"

Bates	Handley	Gregory	Griffin
Cabaniss	Hall	McMillan	Bussey

As we find our journey over the rugged trail of education drawing to a close, we, the Seniors of Garland High School, look forward with anticipation to a new and broader life. Yet we realize that many of those things which have been the very essence of our life until the present must be left behind, with only fond memories to aid us in re-living the past.

With the aim of recording the events of the 1944-45 school year for the future, the Staff of this yearbook set about its task and dutifully combed the campus for "facts, figures, and fotos." We now present the '45 "Owls Nest" with every hope that you may be satisfied. It will be a full and compensating reward for us if, in your eyes, the contents which follow have justified your patience and our work.





# Table of Contents

---

---

DEDICATION

FACULTY

CLASSES

WHO'S WHO

FAVORITES

ACTIVITIES

SPORTS

PATRONS



wordswartwoveterans.org/gallard-texas



# "OWLS NEST" STAFF

Charles Cabaniss . . . . .	Editor-in-Chief
Gloria Bussey . . . . .	Associate Editor
Phyllis Handley . . . . .	Business Manager
Jim Gregory . . . . .	Assistant Manager
Frances Bates . . . . .	Art Editor
Dorothy Hall . . . . .	Photographer
Bobby Griffin } . . . . .	Sports Editors
Gaylord MacMillan }	

[worldwartwoveterans.org/garland-texas](http://worldwartwoveterans.org/garland-texas)  
ASSISTANTS

Publicity  
Harris Hill  
Richard Roach  
Sue Holmes

Organizations  
Edwin Groves  
Martha Faye Nelson  
Mary Hilda Ward

## CLASS REPRESENTATIVES

Jo Newman . . . . .	Seniors
Johnny Scott . . . . .	Juniors
Docia Schultz . . . . .	Sophomores
Nancy Buster . . . . .	Freshmen
Ethna Anderson . . . . .	Sponsor



# *Dedication*

WITH THE HIGHEST  
ESTEEM FOR HIM PER-  
SONALLY, AND WITH  
EXPRESSION OF OUR  
SINCERE APPRECIATION  
FOR HIS SERVICE  
TO OUR ALMA MATER,  
WE, THE STAFF OF THE  
1945 "OWLS NEST," DED-  
ICATE THIS EDITION TO  
OUR SUPERINTENDENT

[worldwartwoveterans.org/garland-texas](http://worldwartwoveterans.org/garland-texas)





A TRIBUTE  
TO  
OUR SERVICEMEN

AS WE PAUSE BEFORE STARTING ON THAT LAST RIDE OVER THE TRAILS OF G. H. S., WE GRATEFULLY EXTEND OUR APPRECIATION TO THOSE OF OUR COMMUNITY WHO HAVE SERVED THEIR COUNTRY AND US, AS BEST THEY MIGHT, WHETHER IN THE ARMY, NAVY, MARINES OR MERCHANT MARINES. WE WISH TO PAY ESPECIAL HONOR TO THE BOYS WHO HAVE GIVEN THEIR ALL, THEIR VERY LIFE BLOOD, IN THE THREE YEARS WE HAVE BEEN AT WAR, THAT WE MAY CONTINUE TO LIVE AS FREE AMERICANS IN THIS GREAT LAND OF OURS.

WE HAVE ATTEMPTED TO MAKE THIS ROLL OF OUR DECEASED SERVICEMEN AS COMPLETE AS POSSIBLE, AND EXPRESS OUR REGRET IF ANY NAMES HAVE BEEN OMITTED.

CHARLES WESLEY AXE  
JEFF CORLEY  
MARK CABANISS  
NEAL JONES  
JOHN H. KING  
EARL MARSHALL  
C. L. MELTON  
L. O. "PAT" QUESSENBERRY  
JAMES ROUNTREE  
HENRY SELLERS  
BUDDY SHIPLEY  
THOMAS SMITHWICK  
STEVE SMOLKA  
BEN TISINGER, JR.

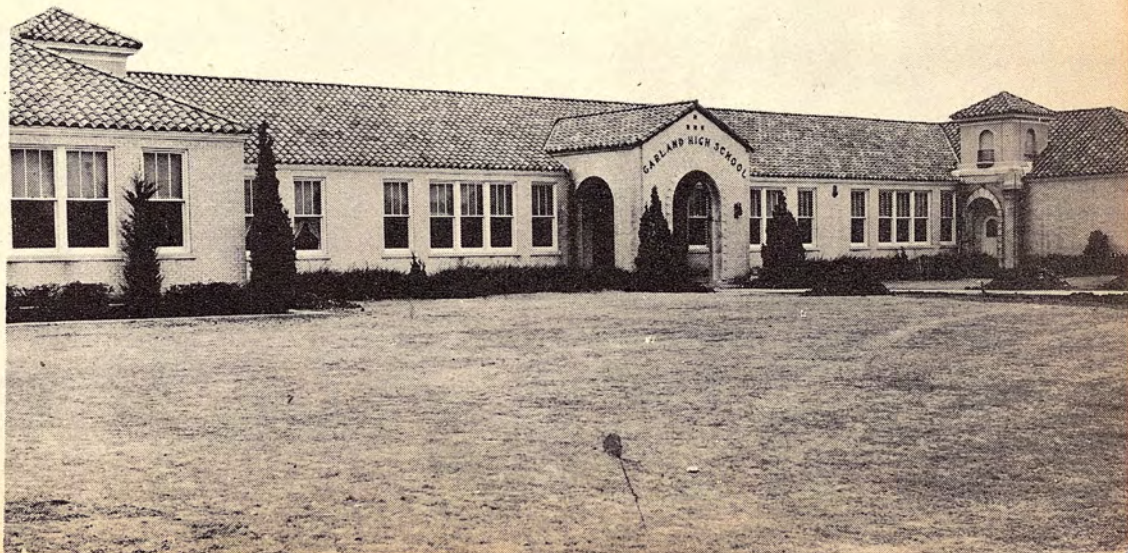




1  
9  
4  
4  
★

★  
1  
9  
4  
5

[worldwartwoveterans.org/garland-texas](http://worldwartwoveterans.org/garland-texas)  
*Garland High School*





## PARENT-TEACHER ASSOCIATION



### P.T.-A OFFICERS

Left to right: Mrs. Warren, treasurer; Mrs. Alexander, vice-president; Mrs. Parker, secretary; Mrs. Schultz, finance chairman; Mrs. Aust, president; Mrs. Morrison, hospitality chairman; Mrs. Monroe, membership chairman; Mrs. Hickman, room mother chairman (Grammar School); not shown: Mrs. Squibb, room mother chairman (High School); and Mrs. McKnight, parliamentarian.

DURING THE PAST YEAR THE STUDENTS OF GARLAND HIGH SCHOOL HAVE REALIZED MORE CLEARLY THAN EVER BEFORE THE IMPORTANT SERVICE THAT THE P.-T.A. RENDERS THEM. TO EXPRESS OUR FULL APPRECIATION WOULD BE HOPELESS, YET WE FEEL THAT BY PLACING SOME MARK OF RECOGNITION IN THE YEARBOOK, WE MAY BEST SHOW OUR REGARD FOR THIS VALUABLE ORGANIZATION.





worldwartwoveterans.org | garland-texas

Faculty

CHUCK  
'45



SCHOOL BOARD  
D. CECIL WILLIAMS, PRESIDENT  
RAY CAMPBELL, VICE PRESIDENT  
W. C. WARREN, SECRETARY  
A. B. HARRIS  
W. C. DAUGHERTY  
BOB MERRITT  
GEO. COON

C. GLAZE, HIGH SCHOOL PRINCIPAL  
H. D. PEARSON, ELEMENTARY PRINCIPAL

## Garland Public Schools

E. D. BUSSEY, SUPERINTENDENT

GARLAND, TEXAS

December 19, 1944

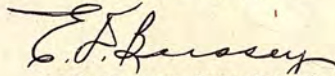
Dear Seniors of '45:

Never before perhaps in the history of this country has youth been faced with more challenging problems or with greater opportunities than at present. Not only are we in the midst of an armed conflict, the like of which man has never known, but a dozen and one issues of a domestic nature also press for solution.

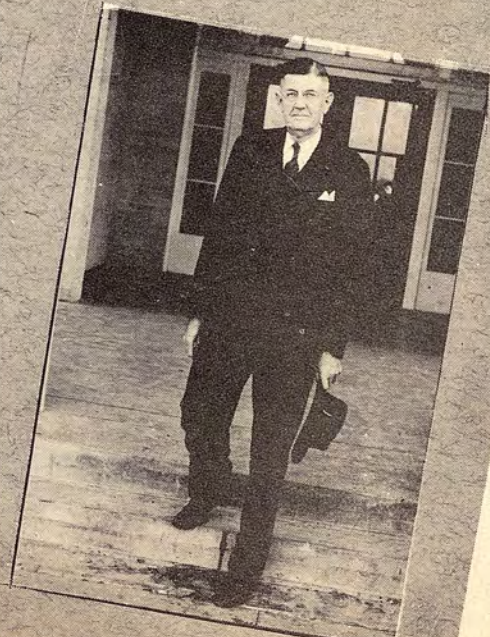
If the many problems that beset us are to be solved wisely, we must have leaders. And leadership, especially in a democracy, involves more than pursuing formal courses, acquiring facts, and passing examinations in high school. It involves the formulation of a philosophy of life in which character, humane ideals, the search for truth, and the discovery of how one can best use his talents in the service of others, are important considerations.

Today, if you have this character, you will go out into the world with confidence that you can face its problems without fear or uncertainty. Let your ideals be high, your purpose steady. Each one of you have embarked upon a discovery - to discover that - yourselves and your relationship to all life - "to think one's self to be true, and it must follow as the night the day, thou canst not then be false to any man."

Very truly yours,



E. D. Bussey, Superintendent  
Garland Public Schools





# ADMINISTRATORS



SUPERINTENDENT E. D. BUSSEY

[worldwartwoveterans.org/garland-texas](http://worldwartwoveterans.org/garland-texas)



PRINCIPAL C. GLAZE

# GARLAND HIGH SCHOOL



# Faculty



ETHNA ANDERSON  
Rockwall  
English

MARIANNA BRADY  
Dallas  
Physical Education



MRS. E. D. BUSSEY  
Garland  
School Secretary

MARIE HARRISON  
Commerce  
Social Science

## School

D. Cecil Williams  
President

Ray Campbell  
Vice-President

W. C. Warren  
Secretary

worldwartwoveterans.org/garland-texas



LOUISE HUNT  
Garland  
Commercial Arts

LOUISE LEE  
Dallas  
Spanish



HOWARD TAYLOR  
Garland  
Band



LUCILLE MACMILLAN  
Garland  
Homemaking

BILLIE NICKELS  
Greenville  
Science

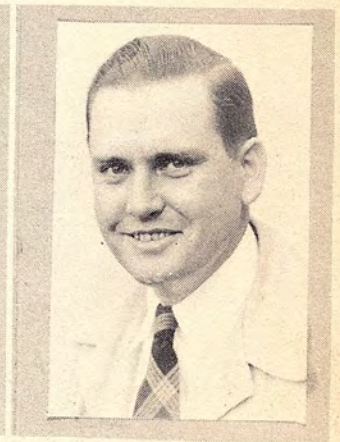


# Faculty

CLARA BELLE PORTERFIELD  
Garland  
Mathematics



RALPH SANDERS  
Garland  
Vocational Agriculture



## Board

A. B. Harris  
W. C. Daugherty  
Bob Merritt  
George Coon

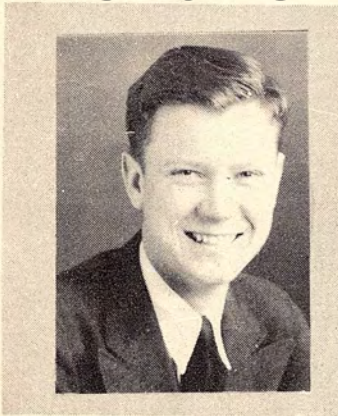
JERRY SELLERS  
Garland  
Athletics



SARAH STONE  
Celeste  
English



worldwartwoveterans.org/garland-texas



**FRANK GREENHAW**  
Garland  
Band

SUE STROUD  
Garland  
Mathematics



JO TURNEY  
Kaufman  
Librarian



MARSHALL VANDERBURG  
Chicota  
Social Science  
Athletics



MABEL WHORTON  
Garland  
English





## OFFICE ASSISTANTS



Faye Harris   Dorothy Hall   Colleta Coon   Billie Boaz   Eunice Cain  
Jean Ragland   Jean Borchardt   Jo Newman   Gloria Bussey

[worldwartwoveterans.org/garland-texas](http://worldwartwoveterans.org/garland-texas)

## LIBRARY ASSISTANTS



Carolyn Huggins   Peggy Williams   May Beth Watson   Monita Chaney  
Anna Bratcher   Miss Turney   Wanda Oliver





worldwarveterans.org/gaiano/texas

# Seniors





# Class of 1945



## CLASS OFFICERS

JIM GREGORY  
President

CHARLES CABANISS  
Vice-President

TERRY DEANE  
Secretary

WANDA OLIVER  
Treasurer

JEANNE RAGLAND  
Reporter



BILLIE NICKELS  
Sponsor



LUCILLE MacMILLAN  
Sponsor



MARGE ANDREWS

Home Ec. 1, 2, 3; Science Club 1.

MARTHA SUE ANDREWS

Home Ec. 3.

CARL AXE

Science Club 1; F.F.A. 2, 3, 4; Football 4.

MARY BAILEY

Home Ec. 3.

RUTH BAILEY

Science Club 1; Home Ec. 1, 2, 3; Secretarial Training Club 4; Physical Education Club 3.

JERRY BARTON

(Transferred from North Dallas High School; Student at G. H. S. 2½ years.)  
Spanish Club 3, 4.

FRANCES BATES

Home Ec. 1, 4; Spanish Club 1, 2; Junior Historian Club 3; "Owls Nest" Staff 3, 4; Art Editor 4.

RUBY BLASSINGAME

Home Ec. 1, 2; Science Club 1.

BILLY JUNE BOAZ

(Transferred from Reinhardt School; Student at G. H. S. 3 years.)

Spanish Club 2; Secretary-Treasurer 2; Prep Squad 2; Junior Historian Club 3.

JEAN BORCHARDT

(Transferred from Lake Dallas, Texas; Student at G. H. S. 2 years.)

Home Ec. 3; Pep Squad 3; Junior Historian Club 3; Office Assistant 4; Library Assistant 4.



worldwartwoveterans.org/garland-texas





*Love of God*

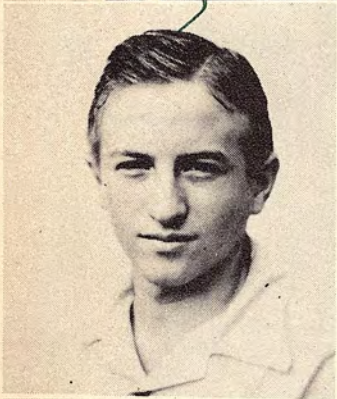


VANDA BOWEN

Home Ec. 1, 2; Band 1; Class Reporter 1; Science Club 1; Basketball 3, 4; Junior Historian Club 3; Flag Bearer 4.

LLOYD BOYD

(Transferred from Shriner Institute, Kerrville, Texas; Student at G. H. S. 1 year.)  
Spanish Club 4.



JAMES BRUMBELOE

Science Club 2; Fireman 3; English Club 1.

BILLY HOWELL BUHLER

Science Club 1; Spanish Club 1, 2; F.F.A. 4.



BILLY BURKARD

Science Club 1, 2; Fireman 1, 2, 3.

JOSEPH BURKARD

Junior Historian Club 3.

worldwartwoveterans.org/garland-texas



BILL BURLESON

Band 1, 2, 3; Library Assistant 2, 3, 4; Tennis 3; Science Club 3; Choral Club 3; Class Reporter 3.

GLORIA BUSSEY

Science Club 1; Home Ec. 1, 2; Band 1, 2, 3, 4; Vice-President 4; Victory Council 2; Spanish Club 3, 4; Junior Historian Club 3; Choral Club 3; Press Club 3; Physical Education Club 3; Reporter 3; Secretarial Training Club 4; Reporter 4; Office Assistant 4; "Owls Nest" Staff 4; Assistant Editor 4; "Owl Eye" Staff 4.



CHARLES CABANISS

Class President 3; Class Vice-President 4; Class Reporter 2; Class Favorite 2; "Who's Who" 3; Football Letter 3, 4; Basketball 1, 2, 3, 4; "Owls Nest" Staff 2, 3, 4; Art Editor 2, 3; Editor 4; Annual Representative 2; Assistant Fire Marshall 3; Library Assistant 2, 3; "High Hoots" Staff 2; Junior Historian 1, 2, 3; Vice-President 3; Junior Historian Radio Play 1; Press Club 3; Reporter 3; Science Club 1, 2; 4-H Club 1.

EUNICE CAIN

Homemaking 1, 2, 3; Office Assistant 4; 4-H Club 1, 2; Choral Club 3.



JAMES PAUL CALDWELL

Science Club 1; F.F.A. 4.

MONITA CHANEY

(Transferred from Mt. Pleasant, Texas; Student at G. H. S. 1½ years.)

Choral Club 3; Library Assistant 4; "Owl Eye" Reporter 4; Drum Major 4.

ANN CHUMLEY

Home Ec. 1, 2, 3; Basketball 1, 2, 3, 4; Spanish Club 2, 4.

ROLAND COLDWELL

Band 1, 2, 3; F.F.A. 2, 3.

SHIRLEY COMPTON

Band 1, 2; Home Ec. 1, 4; Spanish Club 1, 2; Junior Historian Club 3.

WILLIAM COMPTON

Science Club 1; Spanish Club 2, 3, 4; Secretarial Training Club 4; Football Letter 3, 4; F.F.A. 4.

GUY COUTHAN

(Transferred from Orange High School; Student at G. H. S. 1 year.)

JIMMIE LEE COX

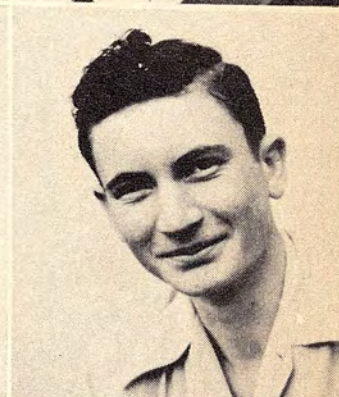
Secretarial Training Club 4; Home Ec. 2, 3, 4; 4-H Club 1, 2, 3, 4.

JO JEAN CRABB

Home Ec. 1, 2; Pep Squad 1, 3.

GENEVA CRAWFORD

Home Ec. 1, 2, 3; Secretarial Training Club 4.



worldwartwoveterans.org/garland-texas





BILLY DEAN CREEL

(Transferred from Houston, Texas; Student at G. H. S. 2 years.)

IMA JEAN CREEL

(Transferred from Houston, Texas; Student at G. H. S. 2 years.)  
Chofal Club 3; Science Club 3.



THOMAS DANIEL

Science Club 1, 2; 4-H Club 1, 2; F.F.A. 4.

JOHN DAVAULT

(Transferred from Reinhardt School; Student at G. H. S. .. years.)  
F.F.A. 4; Football 3, 4.



TERRY DEANE

(Transferred from Lawrence, Massachusetts; Student at G. H. S. 2 1/2 years.)

Junior Historian Club 3; Physical Ed Club 3; Spanish Club 3, 4; Choral Club 3; Class Secretary 4; Owl Eye Staff 4; Associate Editor 4; Cheerleader 4; "High Hoots" Staff 3, 4.

MARY EVELYN DRUM

Home Ec. 1, 2, 3; 4-H Club 1.



WILLENE EASTERLY

(Transferred from Kemp, Texas; Student at G. H. S. 3 years.)

Home Ec. 2, 3; Secretarial Training 4.

A. B. ELLIOT

F.F.A. 2, 3.



GEORGE FISCHER

F.F.A. 2, 3, 4; Football 4; 4-H Club 1.

J. L. FORD

Basketball 1, 2, 3, 4; Football Letter 3, 4; F.F.A. 4.



NITA FAYE GARRISON

Home Ec. 1; Spanish Club 1, 2; Band 1, 2, 3.

C. O. GAULDEN

F.F.A. 2, 3, 4.

JAMES GIPSON

Spanish Club 2, 3, 4; Band 3; Firemen 3.

DALE GOFF

(Transferred from Stephen F. Austin High; Houston, Texas; Student at G. H. S. 2 years.)  
Spanish Club 3; President 3.

MARY GOFF

(Transferred from Stephen F. Austin High; Houston, Texas; Student at G. H. S. 2 years.)  
Home Ec. 4.

CHARLIE GRANSTAFF

Spanish Club 1; Football Letter 2, 3, 4; F.F.A. 4; Junior Historian Club 3; Science Club 1.

JIM GREGORY

Class President 1, 4; Football Letter 3, 4; Basketball Manager 3; Basketball 4; Spanish Club 1; Science Club 1; "Who's Who" 2; 4-H 1, 2; "Owl Eye," Sports Editor 3; "Owls Nest" Staff 3, 4; Assistant Business Manager 4; Assistant Fire Marshal 3; Library Assistant 3; Press Club 3; Vice-President 3.

BOBBY GRIFFIN

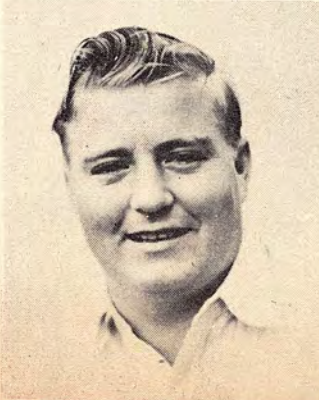
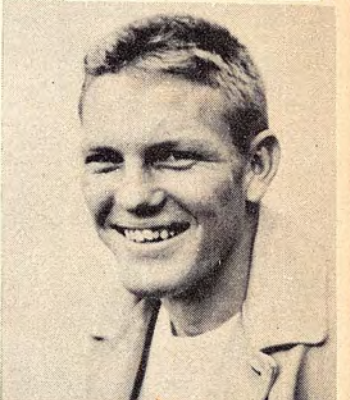
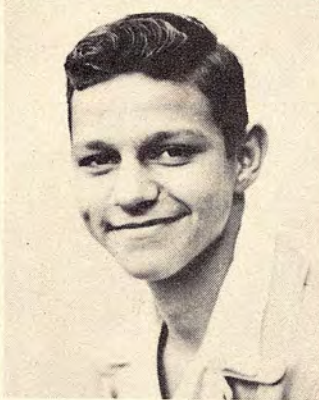
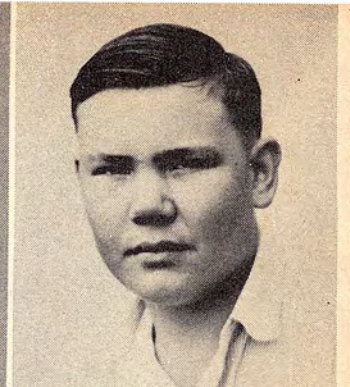
Vice-President of Class 1, 3; Basketball 2, 3, 4; F.F.A. 4; Football 2, 3, 4; Co-Captain 4; Manager 1; "Owls Nest" Staff 4; "High Hoots" 3; Sports Editor 3; Spanish Club 1, 2.

ELMER GRISHAM

Spanish Club 1; Science Club 3, 4; Football 3, 4.

BETTY HALL

Home Ec. 1, 2, 3; Reporter 3; Science Club 1; Class Secretary 1; Library Assistant 3; Class Secretary 3.







**DOROTHY LOU HALL**

Home Ec. 1, 2; Basketball 1, 2, 3, 4; Science Club 1; Spanish Club 3, 4; Physical Education Club 3; Defense Stamp Salesman 3; "Owls Nest" Staff 4; Office Assistant 4; Senior Counselor 4; Secretarial Training Club 4; President 4.

**PHYLLIS HANDLEY**

Band 1, 2, 3, 4; Secretary 4; "Owls Nest" Staff 1, 3, 4; Business Manager 4; Junior Historian 3; Physical Education Club 3; Press Club 3; Choral Club 3; Spanish Club 3, 4; Victory Council 2; Home Ec. 1, 2; Science Club 1; Secretarial Training Club 4; Secretary 4; Horizon Club 4; Secretary 4; Senior Counselor 4.



**LENA FAYE HARRIS**

Home Ec. 1, 2; Junior Historian Club 3; Choral Club 2, 3; "Owl Eye" Staff 4; Editor 4; Basketball 1; Band 3, 4; Office Assistant 4.

**JULIA HAYLE**

(Transferred from Reinhardt School; Student at G. H. S. 3 years.)

Home Ec. 2; Spanish Club 2, 3; Junior Historian 3; Secretarial Training Club 4.



**JUNE HEATH**

(Transferred from Denison, Texas; Student at G. H. S. 2 years.)

Secretarial Training Club 4.

**JOHNNIE HYMAN**

English Club 3; Secretarial Training Club 3.



**HAROLD INGRAM**

F.F.A. 1, 2, 3; Secretarial Training Club 4.

**HOMER JOHNSON**

Football Letter 2, 3, 4; Basketball 3, 4; Spanish Club 2, 3; F.F.A. 4.



**TINA FAYE KEELE**

Science Club 1; Spanish Club 3, 4; Home Ec. 1, 2.

**WANDA MADGE LEE**

(Transferred from Houston, Texas; Student at G. H. S. 3 years.)

Science Club 2; Pep Squad 3; Home Ec. 4; Choral Club 3.



WILLENE LEE

Home Ec. 1, 2; Science Club 1; Pep Squad 1, 2;  
Secretarial Training Club 4.

POLK LITTLE

F.F.A. 2, 3.

GAYLORD MacMILLAN

(Transferred from Commerce, Texas; Student at G. H.  
S. 2 years.)

Band 3, 4; "Owls Nest" Staff 4; Defense Stamp  
Salesman 3.

PAUL LEE MANNING

Band 1, 2, 3, 4; President 4; Spanish Club 3, 4;  
Science Club 2; Choral Club 2, 3.

RUFUS McCLUNG

(Transferred from Juaquin, Texas; Student at G. H. S.  
3 years.)

Spanish Club 2, 3, 4; F.F.A. 3, 4; Reporter 3; Presi-  
dent 4; Football Letter 3, 4.

DAN MINNEMAN

(Transferred from Boude Story Junior High, Dallas,  
Texas; Student at G. H. S. 3 years.)

Spanish Club 2; Band 2, 3, 4; "Owls Nest" Staff 3;  
Fire Marshal 2; Library Assistant 2.

DORIS MOORE

Home Ec. 3.

JEANNE MORRIS

Home Ec. 1, 2, 3; Secretarial Training Club 4; Science  
Club 1; Pep Squad 1.

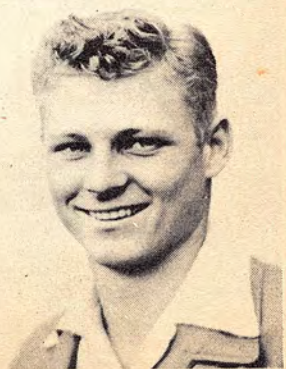
VERLENA MORRISON

(Transferred from Malakoff, Texas; Student at G. H.  
S. 1 year.)

Secretarial Training Club 4.

JOHN ROBERT MOTLEY

Football Letter 2, 3, 4; Spanish Club 2, 3, 4; F.F.A.  
4; Science Club 1.



worldwartwoveterans.org/garland-texas





HOMER MYERS  
F.F.A. 2, 3, 4.

JO NEWMAN  
Science Club 1; Home Ec. 1, 2; Press Club 1, 3;  
Junior Historian Club 3; Choral Club 2, 3; Band 1, 2,  
3, 4; Librarian 4; Basketball 3; Physical Education  
Club 3; "Owl Eye" Staff 4; "High Hoots" Staff 1;  
"Owls Nest" Staff 4; Office Assistant 4; Class Fave-  
rite 2.



JACK OGLE  
Football Letter 3, 4; F.F.A. 1, 2, 4; Fireman 1, 2;  
English Club 2.

WANDA JEAN OLIVER  
Home Ec. 1, 2, 3; Spanish Club 3, 4; Basketball  
1, 2, 3, 4; Physical Education 3; Library Assistant 4;  
Class Treasurer 4.



ARDEN PAUL  
Basketball 1, 2, 3, 4; Football Letter 3, 4; Manager  
2; Spanish 2, 3; F.F.A. 4; Science Club 1; Flag  
Raiser 4; Junior Historian Club 3; Class Favorite 3.

JEANNE RAGLAND  
Home Ec. 1, 2; Junior Red Cross Council 1; Junior  
Historian Club 3; F.F.A. Sweetheart 4; Office Assis-  
tant 4; Class Reporter 4; "High Hoots" Staff 4; Editor-  
in-Chief 4; Flag Bearer 3, 4; Physical Education Club  
3; Pep Squad 1; Horizon Club 4; President 4.

worldwartwoveterans.org/igarland-texas



ALTON ROAN  
F.F.A. 3, 4; Spanish Club 1, 2.

HAZEL ROBERTS  
Secretarial Training Club 4.



MARVIN RODGERS  
(Transferred from Boude Story Junior High; Student  
at G. H. S. 3 years.)  
Class Vice-President 2; Spanish Club 2, 3; Junior  
Historian 3; Library Assistant 3.

ROBERT SANDIFER  
Spanish Club 1, 2; Football 4; Library Assistant 2, 3.



DON SATTERWHITE

F.F.A. 3, 4; "Watchdog" 3; Secretary 4.

DOROTHY SCHAFER

Home Ec. 1, 2; Science Club 1; Secretarial Training Club 4.

JACK SEALY

(Transferred from Red Oak, Texas; Student at G. H. S. 3 years.)  
Basketball 2, 3, 4; F.F.A. 3; Junior Historical Club 3.

BILLY SEALS

F.F.A. 1, 4; Football 4.

PRESTON SHUGART

Basketball 3, 4; Football Letter 3, 4; Spanish Club 2;  
F.F.A. 4; Science Club 1, 2; Junior Historian Club 3;  
"High Hoots" 3.

ROBERT SIMPSON

Transferred from Indian Gap, Texas; Student at G. H. S. 2 years).

REBA FERN SMITH

(Transferred from Maybank, Texas; Student at G. H. S. 3 years.)  
Band 3; Choral Club 2, 3; Home Ec. 2.

DONALD SPERLING

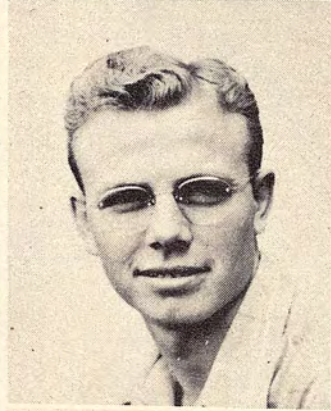
F.F.A. 2, 3, 4; Football Letter 4.

HATTON RAY SUMNERS

Secretarial Training Club 4.

BILLY TAYLOR

F.F.A. 2, 3, 4.



worldwartwoveterans.org/garland-texas





VIRGINIA TRESP

(Transferred from Reinhardt School; Student of G. H. S. 3 years.)

Junior Historian Club 3; Pep Squad 3; Physical Ed. Club 3; Home Ec. 8, 2; Spanish Club 2, 4; Library Assistant 2, 3.

JIMMY TURNER

(Transferred from San Antonio, Texas; Student at G. H. S. 2 years.)



ALMA VADEN

Science Club 2; Home Ec. 1, 2; Pep Squad 4; Choral Club 3; Physical Ed. Club 3.

EUGENIA VALLE

Spanish Club 1, 2; Pep Squad 1, 3; 4-H Club 1, 2, 3, 4; Basketball 1, 2, 3; Home Ec. 1, 4.



BILL VANCE

(Transferred from San Diego, California; Student at G. H. S. 1 year.)

W. M. WAGGONER

F.F.A. 2, 3, 4.



MARY HILDA WARD

Science Club 3; Physical Ed. Club 3; Home Ec. 1, 4; "Owls Nest" Staff 4.

VIRGINIA WARD

(Transferred from Greenville, Texas; Student at G. H. S. 2 years.)

Home Ec. 4; Spanish Club 4.



CHARLES WILSON

(Transferred from Trenton; Student of G. H. S. 2½ years.)

EDWARD WILSON

(Transferred from Corpus Christi; Student of G. H. S. 2½ years.)

Spanish Club 2, 3, 4; Junior Historian Club 3; Junior Fire Warden 3.

worldwartwoveterans.org/garland-texas





MIKE WILSON

Science Club 1, 3, 4,  
Spanish Club 3, 4.



MARY HELEN WRIGHT

(Transferred from Dallas, Texas;  
Student at G. H. S. 3 years.)  
Home Ec. 2, 3, 4; Junior Historian Club 3; Physical Education Club 3.



FRED WINN

(Transferred from Ferris, Texas;  
Student at G. H. S. 2 years.)



JUNE WINHAM



VIRGINIA WYNN

Band 1; Home Ec. 1, 2; Science Club 1; Junior Historian Club 3; Choral Club 3; "High Hoots" Staff 4; Assistant Editor 4; Cotton Queen 4; Class Favorite 1, 3; Physical Education Club 3; Basketball 3, 4; Cheerleader 3, 4; Stamp Salesman 2; Pep Squad 2; "Owls Nest" Staff 1.

MEMBERS OF OUR CLASS NOW IN THE ARMED FORCES

- HAROLD BELL
- MELTON BENNET
- EDSEL DARBY
- BOBBY NEWMAN
- HAL WALLACE
- THERAN WARD
- BILL WOMACK



MARITA YARBOROUGH

Band 2, 3, 4; Pep Squad 1; Physical Education Club 3; Home Ec. Club 1, 2, 3; Basketball 3, 4; Library Assistant 3.





## The Ideal Boy of G. H. S. Should Have:

Dress  
 Hair  
 Disposition  
 Physique  
 Eyes  
 Smile  
 Ink-Spot Cleanliness  
 Mentality  
 Dauntless Courage  
 Handsome  
 Complexion  
 Ego  
 Manner of Speech  
 Posture  
 Eyelashes  
 Athletic Ability  
 Love Affairs  
 Personality

like

Dan Minahan  
 John Bob Motley  
 George Drum  
 Preston Shugart  
 Don Sperling  
 Charlie Granstaff  
 Paul Manning  
 Charles Cabaniss  
 Sebron Hall  
 Jim Gregory  
 Marvin Rogers  
 Edward Wilson  
 Dale Goff  
 Arden Paul  
 Gaylord MacMillan  
 Bobby Griffin  
 Homer Johnson  
 Jack Sealy



[worldwartwoveterans.org/garland-texas](http://worldwartwoveterans.org/garland-texas)

## The Ideal Girl of G. H. S. Should Have:

Dress  
 Hair  
 Disposition  
 Figure  
 Eyes  
 Smile  
 Ink-Spot Cleanliness  
 Mentality  
 Entire Beauty  
 Complexion  
 Ego  
 Jewelry  
 Manner of Speech  
 Posture  
 Eyelashes  
 Athletic Ability  
 Love Affairs  
 Personality

like

Terry Deane  
 Gloria Bussey  
 Wanda Oliver  
 Mary Bailey  
 Jo Newman  
 Monita Chaney  
 June Heath  
 Dorothy Hall  
 Adelle Hall  
 Frances Bates  
 Carla Adair  
 Juanita Dobbs  
 Reba Smith  
 Wanda Lee  
 Ozell Burks  
 Corky Wynn  
 Vanda Bowen  
 Phyllis Handley





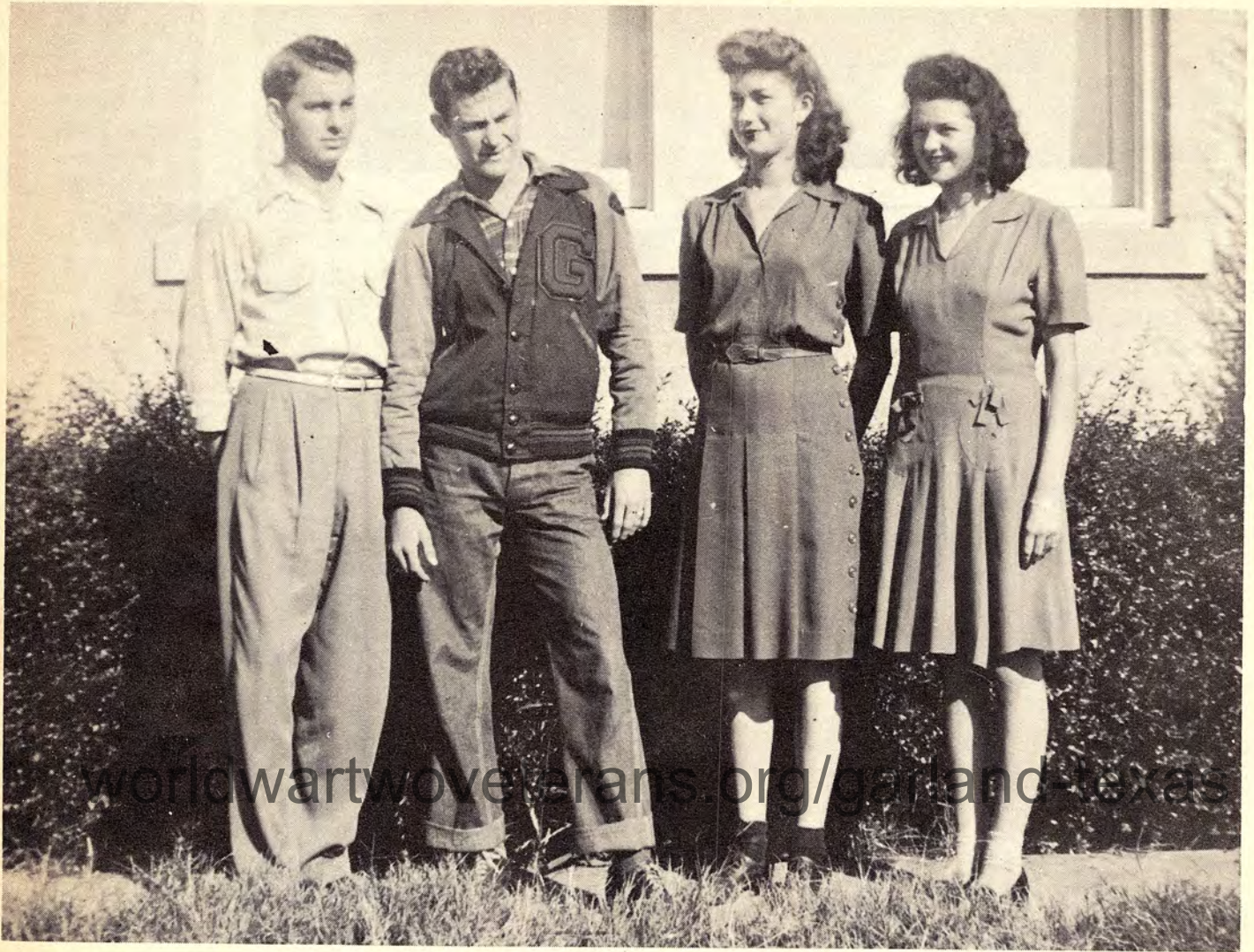


Juniors

CHUCK  
45



# Class of 1946



## OFFICERS

JOHNNY SCOTT  
President

BOYD HILL  
Vice-President

PEGGY WILLIAMS  
Secretary-Treasurer

OZELLE BURKS  
Reporter



MARIE HARRISON  
Sponsor



MABEL WHARTON  
Sponsor



# Juniors

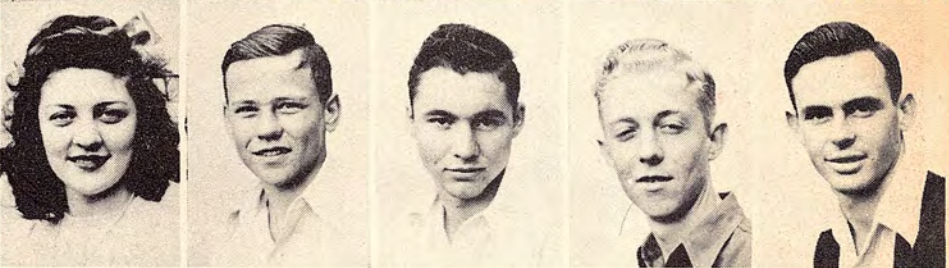


CARLA JANE ADAIR  
 ANNA JEAN ALSTON  
 WILMA ANDERSON  
 WYLENE BARNES  
 BILLIE BATES



JANECIA BELL  
 P. M. BELT  
 BILLY JACK BEVERS  
 CLIFTON BIDDLEMAN  
 AUREL BITTLE

*Do a small  
 April  
 Junior*



CARL BITTLE  
 BENNY SUE BILLINGTON  
 ANNE BLASSINGAME  
 CARL BORCHARDT  
 BILLIE JEAN BOWLING

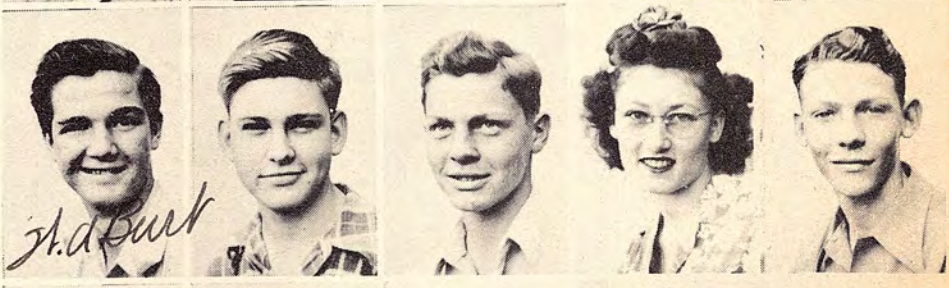
worldwar2veterans.org/garland-texas



BOBBY BRADFIELD  
 PEGGY BRIGHT  
 ESTELLE BRUMMITT  
 OZELLE BURKS  
 GENE BURNS



W. A. BURT  
 JAMES BUTCHER  
 HARRY CABANISS  
 JEAN CARPENTER  
 TOMMY CARPENTER



TOMMY CRANFORD  
 TED CORNELIUS  
 CARL DICKSON  
 JUANITA DOBBS  
 GEORGE DRUM







# Juniors



MARY LOU DUNAWAY

JOHN ERICKSON

MARIE EVANS

MARITA FLETCHER

BILL FLOOK

CECIL FLOOK

JIM GATEWOOD

BOBBIE GREER

JOYCE GOODMAN

ADELLE HALL

JOHN HALL

SEBRON HALL

BETTY JEAN HAMILTON

JENELLE HARGROVE

JIMMIE LOU HART

ALVA LEE HERRING

BOYD HILL

HARRIS HILL

CAROLYN HUGGINS

MARY ANN KEELEY

JUNE KILES

BEVERLY KIRBY

BETTY RUTH LONG

JIM LYONS

JOEL MARTIN

JO ANN MARTIN

NELL McCALLUM

JAMES McENTEE

BILLY FRED McKANNA

PANNIE NELL MacMAHAN

worldwarveterans.org/garland-texas



# JUNIORS



MARGARET ANN MEANS

NORMA JO METCALF

ELDON MERRITT

BOVETA MITCHELL

JUANITA MITCHELL



DORIS MILLER

LOYSE MORPHIS

J. W. NELSON

MARTHA FAYE NELSON

JOHNNIE OEHLKE



DOROTHY ONSTOT

GERALD PAYTON

PATSY RUTH PETTIT

JOHNNIE RUTH PHILLIPS

CLAUDE POINTS



RICHARD ROACH

BILLIE VERN ROAN

ROSE MARY ROBERTS

LEDY RUTH ROBERTS

LILA FAYE ROSE



CLARA RUDOLPH

BETTY RUTH

JOHNNIE SCOTT

FERNELL SCHAFER

JACKIE SHUGART



BILL SKINNER

LELAND SPURLOCK

RUBY STONE

JANE THOMASON

LEE THRASHER



worldwartwoveterans.org/garland-texas



# Juniors



worldwartwoveterans.org/garland-texas



WAYNE ULMER



BOBBY WHORTON



LOUIS WIGGINS



PEGGY WILLIAMS



SUE WINN



MARITA JO WISEMAN



TOMMIE WISEMAN



PRYOR WYNN



JEAN WYRICK



BILLIE YARBOROUGH



BOBBIE YARBOROUGH





# Sophomores



# Class of 1947



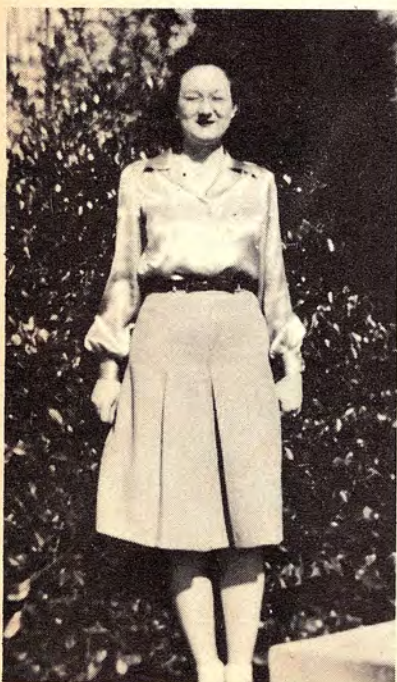
## OFFICERS

CHRIS DAUGHERTY  
President

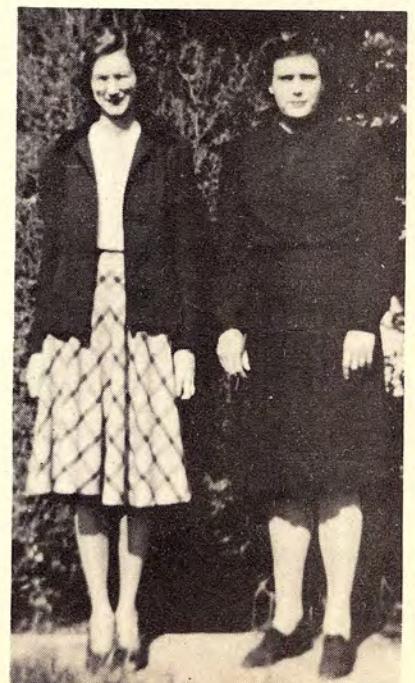
EDWIN GROVES  
Vice-President

WANDA THOMAS  
Secretary-Treasurer

JANE GREGORY  
Reporter



MARIANNA BRADY  
Sponsor



LOUISE LEE and  
CLARA PORTERFIELD  
Sponsors



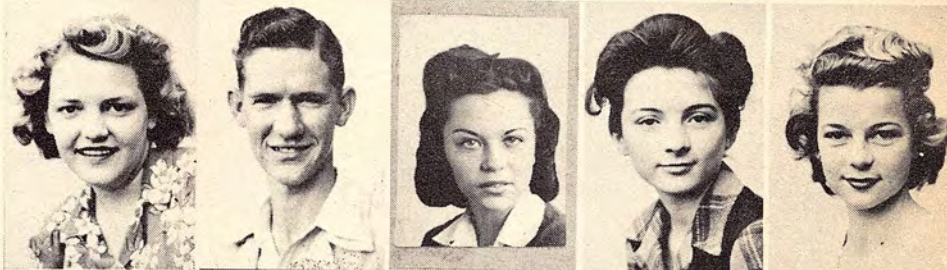


# Sophomores

JACKIE ADAMS  
 MARIANNE BAILEY  
 JERALDINE BAILEY  
 MAXINE BAILEY  
 KENNETH BATES



BLANCHE BECHTOL  
 JIMMY BELT  
 PAT BENSON  
 SARAH BETH BRADSHAW  
 ANNA BRATCHER



DORIS BRASHIER  
 NANCY BRIGHT  
 ANN BURCH  
 EDDIE BURTON  
 DOUGLAS BUTLER



LA VERNE BUTLER  
 ARCHIE CAMPBELL  
 DON CAMPBELL  
 BETTY SUE CARPENTER  
 JUANITA CHASE



EDNA CHAMBERS  
 BILLY JOE CHAMBLEE  
 LUCILLE CLEMENS  
 VIRGINIA CLEVELAND  
 PEGGY COCKRELL



RICHARD COLDWELL  
 J. T. COMPTON  
 JERRY COOMER  
 ALVA RAY COMPTON  
 NELLIE CONNER



worldartwovter.n.org/garland-texas



# Sophomores

*Love to  
a swell  
gal*



COLLETA COON

FLOYD COYLE

LOUIS DANIEL

CHRIS DAUGHERTY

NELDA DAVIS

DENHAM DAY

QUINTEEN DEWOODY

GENE DICKSON

CARL DRUM

LESLIE DURLOO

JOE FORD

DELORES GARRETT

ORVILLE GEREN

JAMES GOFF

BETTY GOLLIER

BILLY GRAHAM

JANE GREGORY

MELVIN GRIFFIN

HAZEL GRISHAM

EDWIN GROVES

JANE GUSTAFSON

GEORGIA MAE HARGROVE

IDA FERRILL HARVEY

ANDREW HAYNES

BELVA JEAN HAYNES

EDNA HOLLY

SUE HOLMES

JAMES HUFFAKER

BERTHA HUTSON

BILLY DEAN HUTSON

worldvartwoveterans.org/garland-texas





# Sophomores

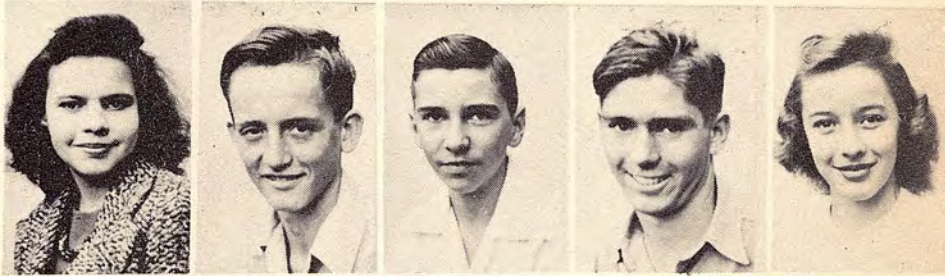
EVA JO JONES

JOE JONES

PRESTON KARRICK

LEMUEL LANGLEY

NANCY MacMILLAN



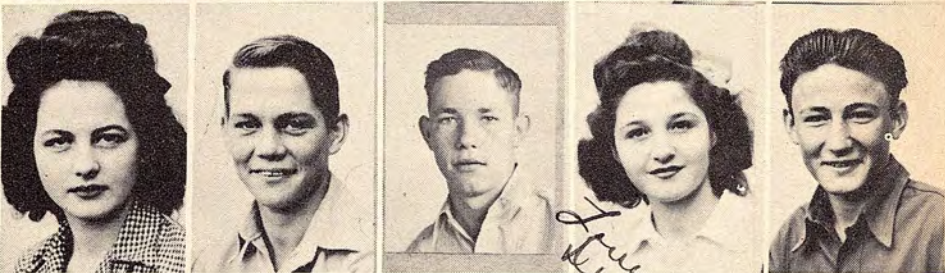
DORIS MAYBERRY

GUY McCLUNG

EARL McDANIEL

DELA FAYE McINTIRE

CHARLES MELTON



WANDA JEAN NASH

PAUL JACK NELSON

JOHN OWENS

CHARLEY PATE

JUANITA PETTIS



DUANE PHY

JOE POOVEY

LA VERNE PRICE

WANDA FAYE PUCKETT

ZOE QUESSENBERRY



EDGAR HOWARD RANEY

BETTY ROBERTS

JOY ROBERTSON

MARY DEAN ROUTH

ELSIE SARVER



JANELL SCHRADER

DOCIA SCHULTZ

GEORGE SCOGGINS

B. W. SENKEL

JOHNNY SHARP



worldwartwoveterans.org/garland-texas

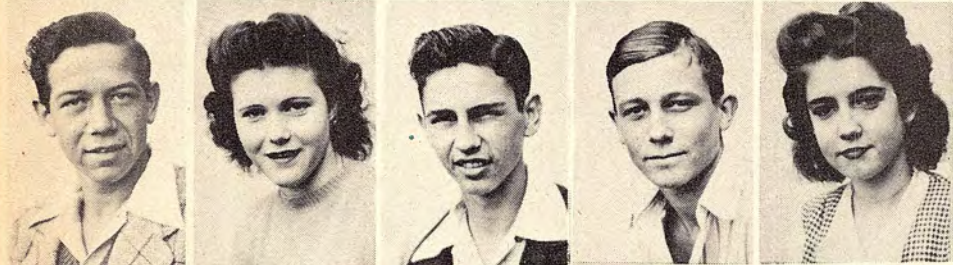
*Frank Miller*

*Johnny Sharp*

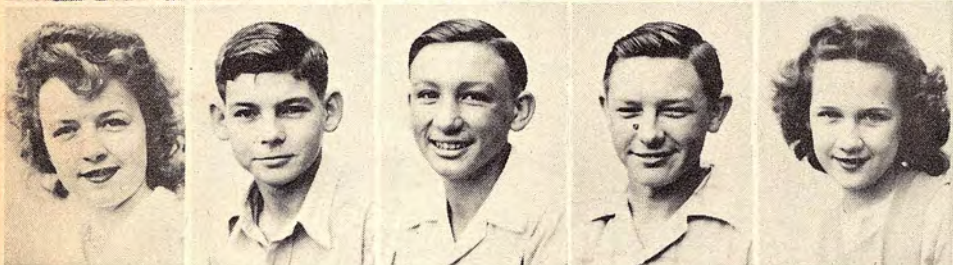




# Sophomores



EDWARD SAHVER  
ANNIE FAYE SHAW  
WALTER SHAW  
BOBBY SHIPLEY  
HATTIE FAYE SHIPLEY



ROSE SHIPLEY  
HAROLD SHORTNANCY  
EUGENE SIMMONS  
JAMES SIMMONS  
GERALDINE SIMS



ERNEST SPEARS  
WANDA JEAN STOVER  
WANDA THOMAS  
JOE THOMSON  
ANNA RUTH TRAVIS

worldwar2veterans.org/garland-texas



LUCILLE TROUSDALE  
NOLA MAE TROUSDALE  
LAURIE ANN VERBICK  
HELEN WAGNER  
BILLY WAYNE WAKELAND



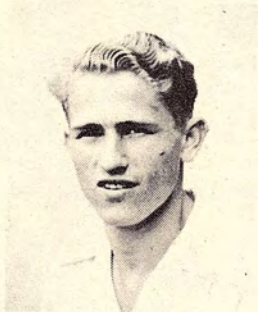
BARBARA WALLACE  
BOBBY DON WALLACE  
JEANNE WALLACE  
BILLY JO WATKINS  
JACKIE WATSON

Handwritten note: "Jackie Watson" with an arrow pointing to the portrait of Jackie Watson.



MAYBETH WATSON  
BILLY WATT  
NIRA WEAVER  
BETTY WHATLEY  
JACK WHITSON





BILLY  
WHITSON



DOROTHY  
WILLEFORD



ANNE  
WILSON



ROY ANN  
WRIGHT



KATHERINE  
YANCY

worldwarvoveterans.org garland-texas







[worldwartwoveterans.org/ga/and-texas](http://worldwartwoveterans.org/ga/and-texas)





worldwartwoveterans.org/garland-texas

Freshmen

CHUCK  
45



# Class of 1948



worldwartwoveterans.org/garland-texas

*Nancy Baker*

## OFFICERS

JACKIE LEONARD  
President

TREVELIN TICKNOR  
Vice-President

NANCY BUSTER  
Secretary-Treasurer

NANCY BAKER  
Reporter



JO TURNEY  
Sponsor



SARAH STONE and  
SUE STROUD  
Sponsors



*Handwritten notes in red and blue ink at the top of the page.*

# Freshmen



CLARA NELL ADAMS  
 PETE ALCALAN  
 JOCQUILINE ALLEN  
 JOHNETTA ANDERSON  
 MURIEL ANDREWS



BETTY SUE ARMSTRONG  
 NANCY BAKER  
 VIONA BALLARD  
 NORMA FAYE BELL  
 JOHNNY BERG



EVELYN BLASSINGAME  
 ICE BOWEN  
 CHARLES BOYD  
 VIRGINIA ANN BRAND  
 JO ELLEN BROWN



HAROLD BURNS  
 EDWARD BURT  
 NANCY BUSTER  
 SAM CABANISS  
 MARTHA JANE CAIN



JIMMIE CARLETON  
 TOMMY CHANDLER  
 JOAN CHAMBERS  
 LOUISE CHENAULT  
 LEON CLARK



JUDY CLIFT  
 RITA NELL COMPTON  
 LOUISE COOMER  
 JEANNIE SUE COON  
 GERALD COOPER



worldwartwoveterans.org/garland-texas





# FRESHMEN

*Elbert Erlanson*

*Louise Janelle*



MOZEL CRAWFORD  
GENE ERICKSON  
ELBERT ERLANSON  
BENNIE FARMER  
JANELLE FLORENCE

*Billy Ford*



BILLY FORD  
JACK GEREN  
BOBBY GIPSON  
JERRY GRAHAM  
SHIRLEY ANN GRAVES

*Love you Bertha*



LEROY GRIFFITH  
FELICIA GOODSON  
BETTY JEAN HALL  
BERTHA HALL  
BOBBY HAMILTON

*Love you Jerry*



WYNELL HARGIS  
EMMA LEE HARGROVES  
GENE HARPER  
LESTER HART  
LONNIE HART

*Love you Emma*



MALCOLM HASTCOAT  
LUTHERINE HAYES  
LILLIE JO HENNING  
EDWARD HILL  
WANDA JEAN HUGHES

*Luck ever Elbert*

*Lots of Luck Wanda Jean*

*Love you Joe*



FCNDA HYMAN  
JESSE JAMES  
BILLY JONES  
BERNICE JORDON  
JAMES KABLER

*Good luck, Fern*

*Lots of Luck*

*Jessie Miller "Robbie"*



# Freshmen



DOROTHY KEAHEY  
 PATRICIA KELLER  
 LEON KIRBY  
 JACKIE LEONARD  
 OWEN LONON



PATSY JO LUNA  
 DONALD MANNING  
 JOHN R. MARTIN  
 MAYDELL MARTIN  
 JOHN McCURRY



BOBBY McDANIEL  
 IDA MAE McINTIRE  
 DAVIS McKinney  
 DOROTHY NELL MELTON  
 DON RAY MONROE

worldwar2veterans.org/garland-texas



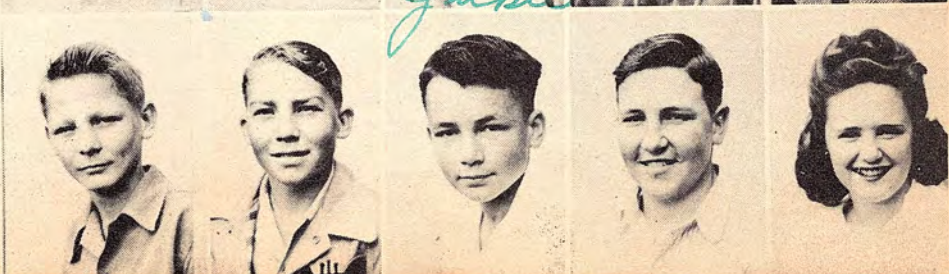
JUANITA MOSS  
 NANCY MOTLEY  
 LOUIS MUNGIOLI  
 JAMES NEVIL  
 LOIS NORLING



ALVIN OEHLKE  
 ELMER OLIVER  
 JACKIE PARKS  
 JACK PENICK  
 BOBBY JOE PIKE



DON RAINES  
 JOHN RANGE  
 TABER RAMSEY  
 GLEN RAY RANEY  
 PATRICIA REILLY







# FRESHMEN

*Steph Love*



JACKIE ROAN  
TOMMIE JOE ROAN  
POLLY SUE ROEBUCK  
JO ANN RUTH  
DON RYAN



BILLY SANDERS  
JEANETTE SANFORD  
INEZ SCOTT  
HAROLD SCHRADE  
JOHN SHAVER



LOUVENIA SHAW  
MINN ROSE SHELTON  
BETTY SIMS  
BILLY SIMS  
POYNTZ SKIPWITH



NORMA SMITH  
BETTY SPEARMAN  
DON SQUIBB  
BUDDY STONE  
HARRY STONE



BOBBY MAC STRINGER  
TREVLIN TICKNOR  
LARRY TILSON  
WILEY TIMMONS  
VERNON THOMAS



BRADLEY TOLAND  
CHARLES TURNER  
DOROTHY VADEN  
JOSE VALLE  
JACKIE VANDEVENTER

www.veterans.org/garland-texas





MIGNON  
WAGONER

*Best of Mignon*



EDWIN  
WILLIAMS



THERESA  
WILSON

*Best of  
Luck  
Theresa*



TRUMAN  
WISEMAN

*Truman  
Wiseman*

*Is a swell gal,  
Marie.*



MARIE  
WOOTEN



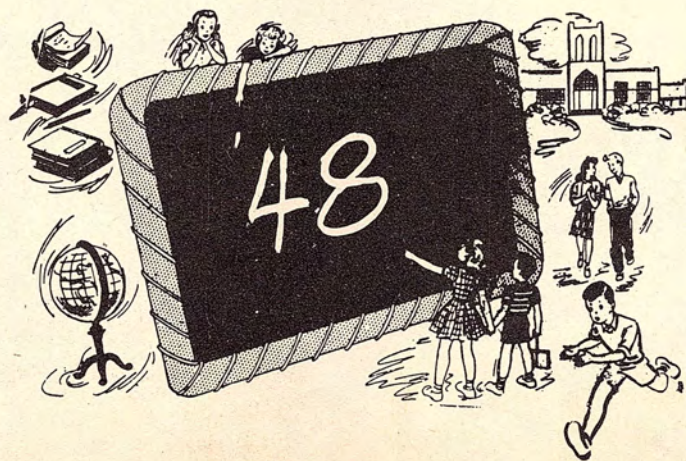
VIRGINIA  
WYNN

*Lots of Love  
Virginia*



BETTY  
WYRICK

[worldwar2veterans.org/garland-texas](http://worldwar2veterans.org/garland-texas)







[www.worldwarveterans.org/garland-texas](http://www.worldwarveterans.org/garland-texas)







*Favorites*

CHUCK  
45



# Best All-Around



worldwartwoveterans.org/garland-texas

BOBBY GRIFFIN AND CORKY WYNN



*Most Handsome and Beautiful*



JIM GREGORY AND TERRY DEANE



*Most Popular*



[worldwartwoveterans.org/garland-texas](http://worldwartwoveterans.org/garland-texas)

CHARLES CABINESS AND MONITA CHANEY



# Senior Favorites



[worldwartwoveterans.org/garland-texas](http://worldwartwoveterans.org/garland-texas)

ARDEN PAUL AND JEANNE RAGLAND



# Junior Favorites

Love to  
cute gal  
"Peggy"



[worldwartwoveterans.org/garland-texas](http://worldwartwoveterans.org/garland-texas)

JOHN SCOTT AND PEGGY WILLIAMS



# Sophomore Favorites



EDWIN GROVES AND JANE GREGORY



# *Freshmen Favorites*



worldwartwoveterans.org/garland-texas

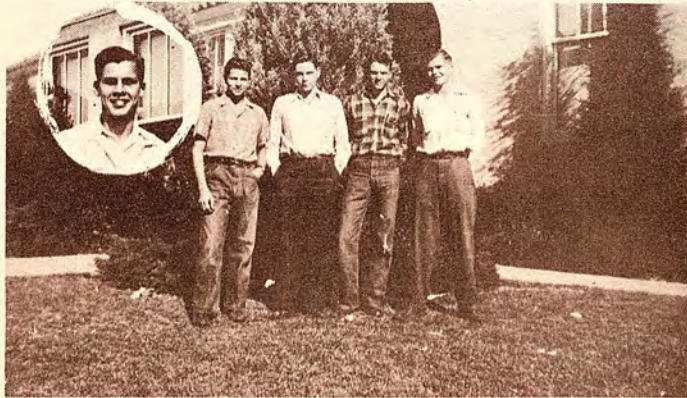
NANCY MOTLEY AND TREVLIN TICKNOR



# CANDIDATES

Because of the large number of candidates for each of the favorite honors, only those receiving at least ten votes for all school honors or five votes for class favorite were placed in the photographs below. The inset on each picture was the runnerup for that honor.

## BEST ALL-AROUND BOY



Inset: Charles Cabaniss. Left to right: Jim Gregory, Homer Johnson, Arden Paul, and Preston Shugart.

## BEST ALL-AROUND GIRL



Inset: Peggy Williams. Left to right: Dorothy Hall, Terry Deane, Adelle Hall, and Jeanne Ragland.

## MOST HANDSOME BOY



Inset: John Bob Motley. Left to right: Arden Paul, Bill Grady Burleson, Edward Wilson, and Charles Cabaniss.

## MOST BEAUTIFUL GIRL



Inset: Jo Newman. Left to right, sitting: Gloria Bussey, Jeanne Ragland, Monita Chaney, Adelle Hall, and Corky Wynn. Standing: Jean Borchardt, Wanda Thomas, Vanda Bowen, and Wanda Jean Oliver.

## MOST POPULAR BOY



Inset: Arden Paul. Left to right, kneeling: Jackie Shugart, Jim Gregorly, and Edward Wilson. Standing: Bobby Griffin, John Bob Motley, Homer Johnson, and Preston Shugart.

## MOST POPULAR GIRL

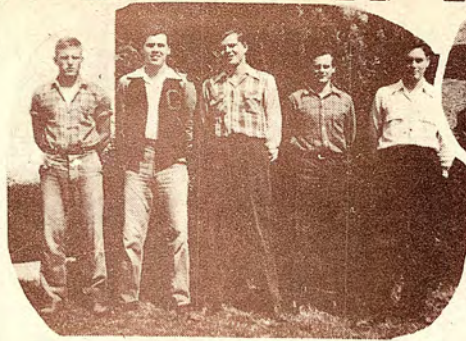


Inset: Jo Newman. Left to right: Terry Deane, Adelle Hall, Gloria Bussey, Peggy Williams, Phyllis Handley, and Corky Wynn.



# CANDIDATES

INSET  
 'RUNNERUP  
 Terry Deane



Left to Right: Bobby Griffin, Charles Cabaniss, Preston Shugart, John Devault, and Homer Johnson.



Left to Right: Phyllis Handley, Wanda Oliver, Jo Newman, and Monita Chaney.



Left to Right: Bill Flook, Boyd Hill, and Jackie Shugart.

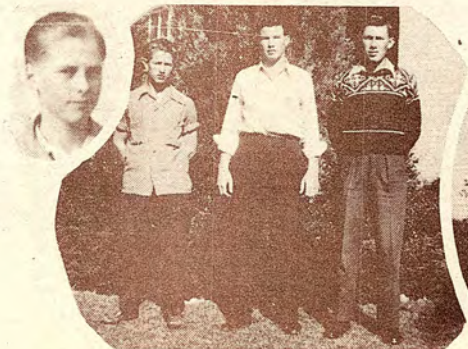


Left to Right: Peggy Bright, and Adelle Hall.

INSET  
 RUNNERSUP  
 John Hall  
 Ozelle Burks

[worldwartwoveterans.org/garland-texas](http://worldwartwoveterans.org/garland-texas)

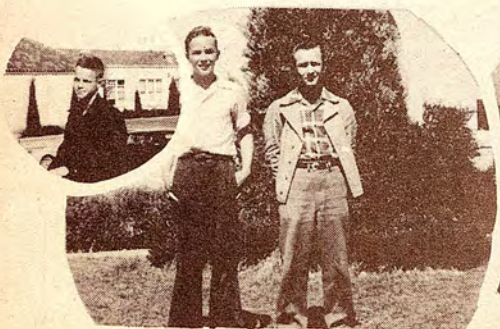
INSET  
 RUNNERSUP  
 Chris Daugherty  
 Wanda Thomas



Left to Right: Billy Whitson, Pete Nelson, and Joe Thomson.



Left to Right: Joy Robertson, and Sue Holmes.



Left to Right: Tommy Chandier, and Harry Stone.



Left to Right: Jacquelin Allen, and Nancy Baker.

INSET  
 RUNNERSUP  
 Jackie Leonard  
 Nancy Buster





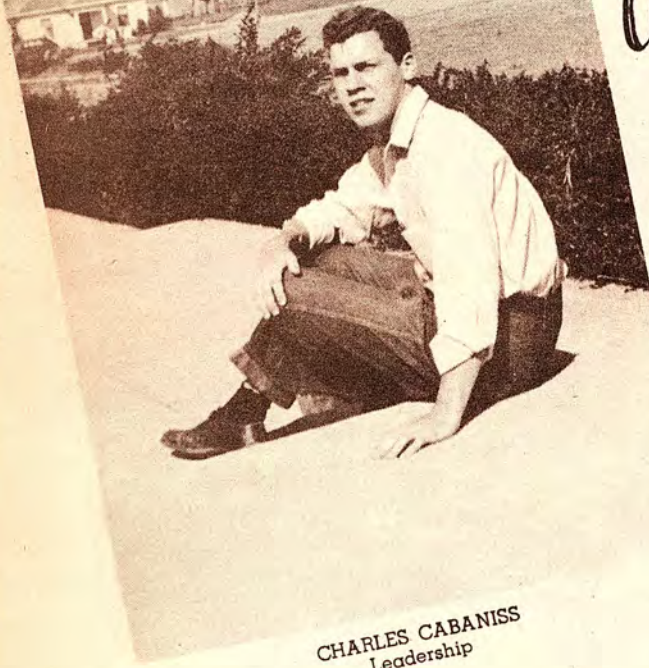
worldwartwoveterans.org/garland-texas

Who's Who

CHUCK  
45



Who's  
Who



CHARLES CABANISS  
Leadership



HARRIS HILL  
Exceptional Ability

[worldwartwoveterans.org/garland-texas](http://worldwartwoveterans.org/garland-texas)

BOBBY GRIFFIN  
Boys' Athletics



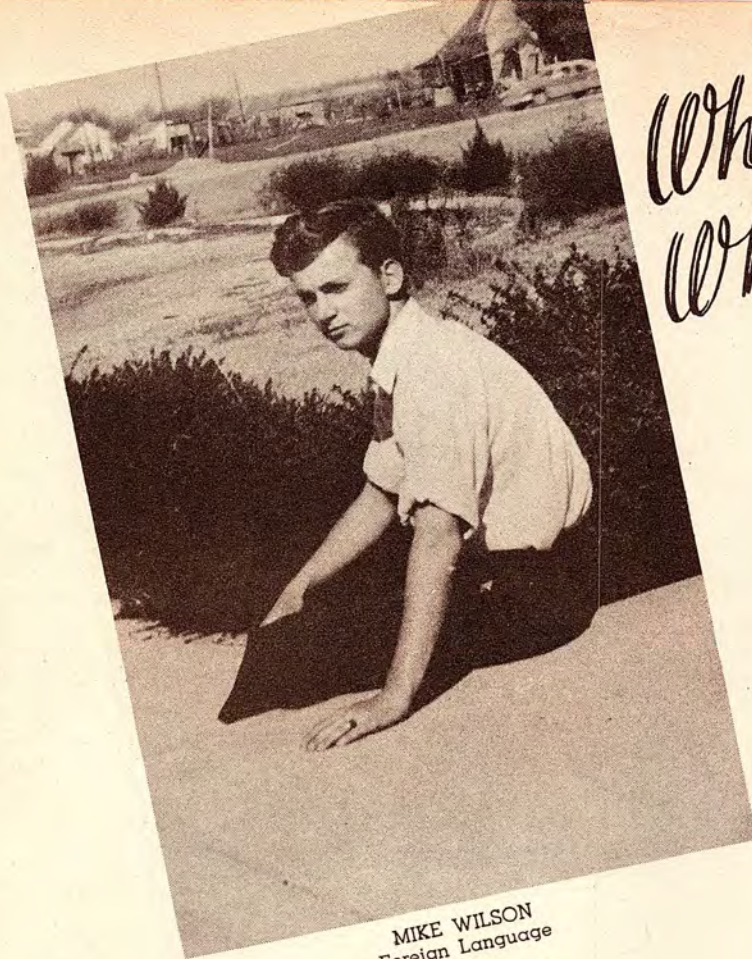
CORKY WYNN  
Girls' Athletics



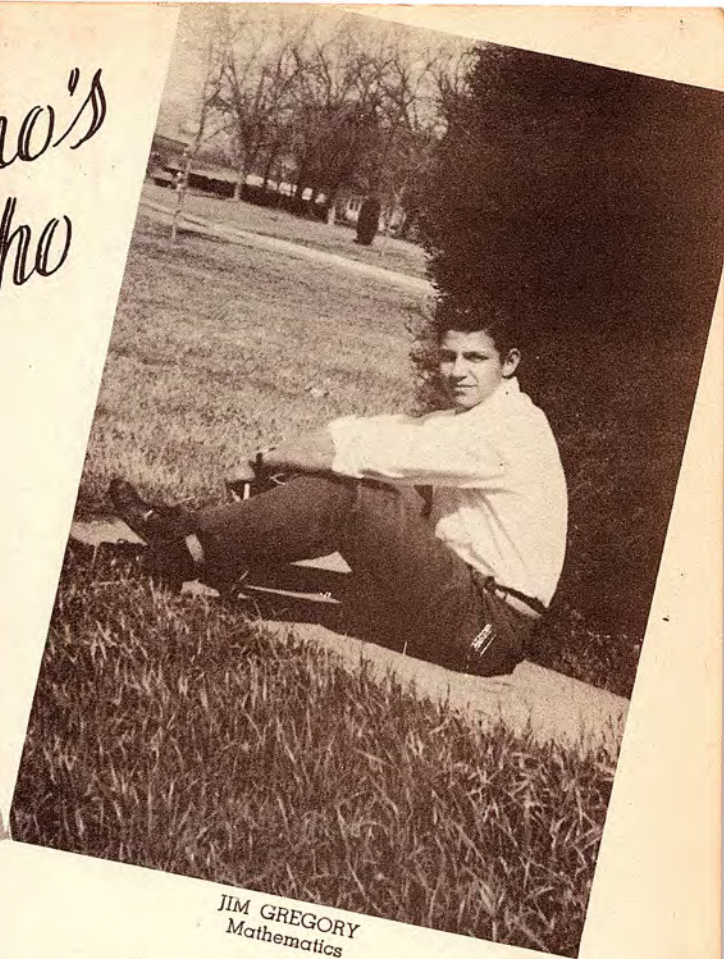
GHS



Who's  
Who



MIKE WILSON  
Foreign Language



JIM GREGORY  
Mathematics

[worldwartwoveterans.org/garland-texas](http://worldwartwoveterans.org/garland-texas)



DOROTHY HALL  
Commercial Arts



SEBRON HALL  
Science

GHS



Who's  
Who



TOMMIE WISEMAN  
Homemaking



GEORGE DRUM  
Agriculture

[worldwartwoveterans.org/garland-texas](http://worldwartwoveterans.org/garland-texas)

CHARLES CABANISS  
History



JEANNE RAGLAND  
Journalism



GHS



Who's  
Who



PAUL MANNING  
Band



RICHARD ROACH  
Public Speaking

[worldwartwoveterans.org/garland-texas](http://worldwartwoveterans.org/garland-texas)



FRANCES BATES  
Art

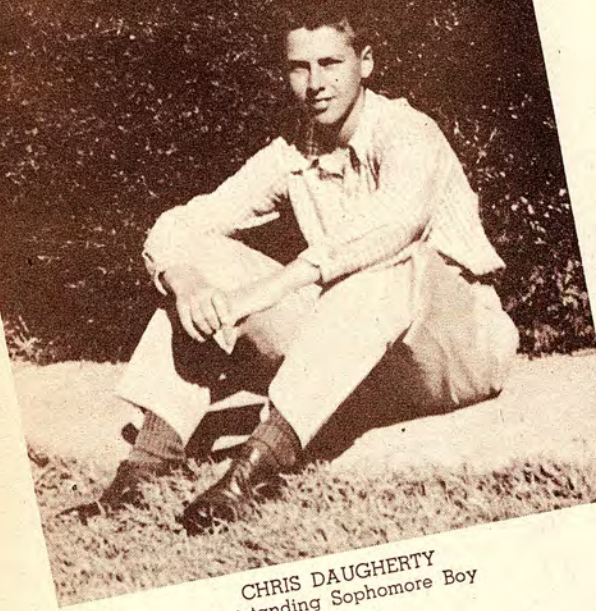


JAMES BUTCHER  
Music

GHS



Who's  
Who



CHRIS DAUGHERTY  
Outstanding Sophomore Boy



SUE HOLMES  
Outstanding Sophomore Girl

[worldwartwoveterans.org/garland-texas](http://worldwartwoveterans.org/garland-texas)

JACKIE LEONARD  
Outstanding Freshman Boy



NANCY BAKER  
Outstanding Freshman Girl



*Nancy Baker*





[worldwar2veterans.org/garland-texas](http://worldwar2veterans.org/garland-texas)

# Activities



# Senior Play



## CAST OF "EYES OF LOVE" AND SKIT

The annual Senior play was presented March 30, 1945, by this year's graduating class. Miss Nickels, class sponsor, chose "Eyes of Love" for the production. A Western skit was given by a group of seniors, under Mrs. MacMillan's direction, between acts at both the matinee and evening performances.

"Eyes of Love" was a comedy-drama which followed the adventures of Gaily, adopted daughter of Judge and Mrs. Barry, as she found her true father, Jim Rankin, aided by Clark, a detective disguised as the butler. In the end she happily married Royal Manton, and Burt Wade and his sister Reeta were resigned to a new, yet brighter future. Lora, the maid, was involved in a love affair with Clark while Carolina, the old Southern servant, watched bewildered.

### PLAY CAST

GAILYA . . . . . Terry Deane  
 BURT WADE . . . . . Jim Gregory  
 REETA . . . . . "Corky" Wynn  
 ROYAL MANTON . . . . . Jack Ogle  
 JUDGE BARRY . . . . . Chuck Cabaniss  
 MRS. BARRY . . . . . Gloria Bussey  
 JIM RANKIN . . . . . James Gipson  
 LORA . . . . . Phyllis Handley  
 CLARK . . . . . John Bob Motley  
 CAROLINA . . . . . Dorothy Lou Hall

SPONSOR — Miss Nickels

### SKIT

Frances Bates  
 Donald Sperling  
 Shirley Compton  
 Bill Grady Burleson  
 Jo Newman  
 Marvin Rogers  
 Mary Hilda Ward  
 Lloyd Boyd  
 Jean Ragland  
 Bobby Griffin  
 Monita Chaney  
 Preston Shugart

SPONSOR — Mrs. MacMillan

worldwarivoveterans.org/garland-texas



# Owls Nest



Phyllis Handley  
BUSINESS MANAGER



Charles Cahaniess ----- Editor-in Chief  
Gloria Bussey ----- Associate Editor  
Ethna Anderson ----- Sponsor



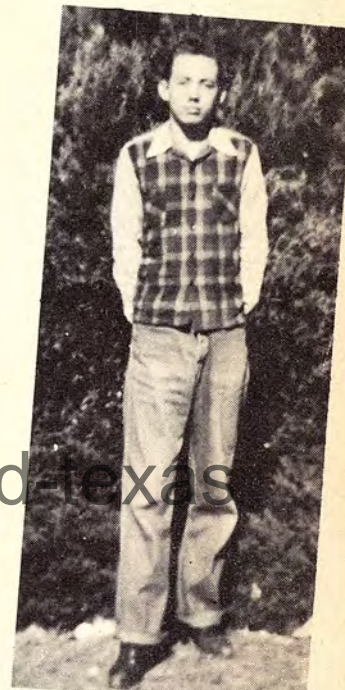
Jim Gregory  
ASSISTANT MANAGER



Bobby Griffin  
SPORTS EDITOR



Class Representatives  
Jo Newman - Johnny Scott  
Docia Schultz - Nancy Buster



Gaylord MacMillan  
SPORTS EDITOR



Dorothy Hall  
PHOTOGRAPHER



Publicity  
Harris Hill - Sue Holmes  
Richard Roach



Mary Hilda Ward -- Edwin Groves  
Martha Nelson



Frances Bates  
ART EDITOR

worldw.twoveterans.org/garland-texas



# High Hoots



JEANNE RAGLAND  
Editor-in-Chief

The "High Hoots" was a weekly feature of the Garland News and was edited by a student staff under the direction of Miss Louise Hunt, Commercial Arts teacher. All items of interest to the student body and community, such as sports, honor rolls, club activities, faculty news, and "gossip columns," were included. Due to the scarcity of paper, special editions were published only at Christmas and Easter by the staff.



CORKY WYNN  
Assistant Editor

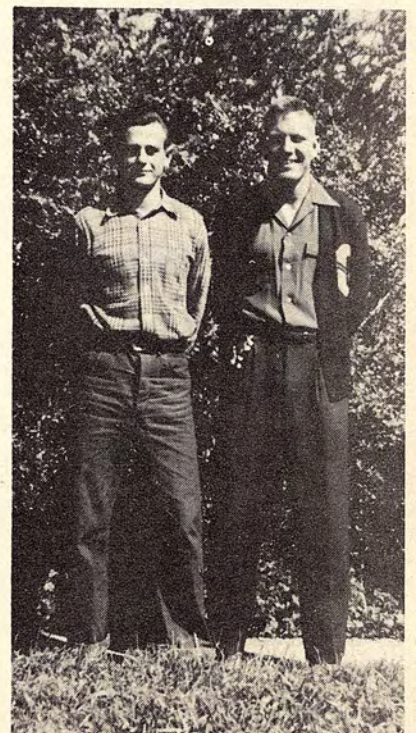
[worldwartwoveterans.org/garland-texas](http://worldwartwoveterans.org/garland-texas)



SUE HOLMES  
Society Editor



LOUISE HUNT  
Sponsor



JOHN DAVALT and BOBBY GRIFFIN  
Sports Editors



# "Owl Eye"



LENA FAYE HARRIS  
Editor-in-Chief

The "Owl Eye" was published in the Garland Tribune and enjoyed a highly successful year. School activities and events were featured in its columns, although "Sadie the Snoop" was the most widely read article of this type in the student publications.



TERRY DEANE  
Assistant Editor

worldwartwoveterans.org/garland-texas



SARAH STONE  
Sponsor

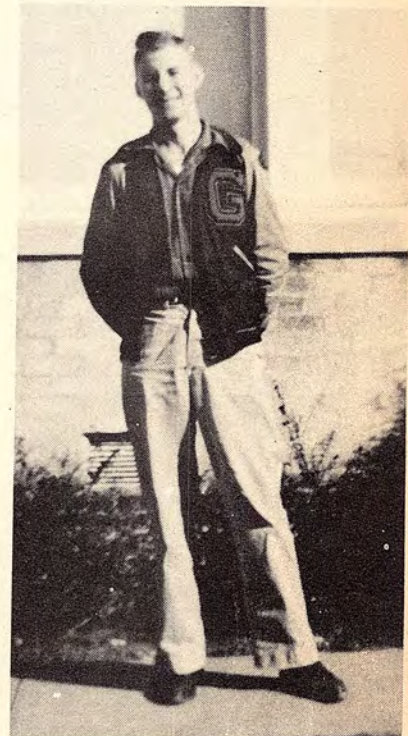


NANCY MacMILLAN  
Society Editor



Reporters

GLORIA BUSSEY, PHYLLIS HANDLEY,  
ANNE BLASSINGAME, BETTY SUE  
ARMSTRONG



SEBRON HALL  
Sports Editor



# Future Farmers of America



RUFUS McCLUNG, President  
 JIMMY LYON, First Vice-President  
 JOHN BOB MOTLEY, Second Vice-President  
 W. M. WAGGONER, Third Vice-President  
 DON SATTERWHITE, Secretary  
 WILLIAM COMPTON, Treasurer

BOBBY GRIFFIN, Reporter  
 JAMES HUFFAKER, Band Master  
 JOHN DAVALT, Historian  
 CHRIS DAUGHERTY, Parliamentarian  
 CHARLIE GRANSTAFF, Sentinel  
 GUY McCLUNG, Song Leader

RALPH SANDERS, Sponsor

NOT SHOWN: Billy Whitson, District Secretary (Daugherty also District Reporter)



## F. F. A.

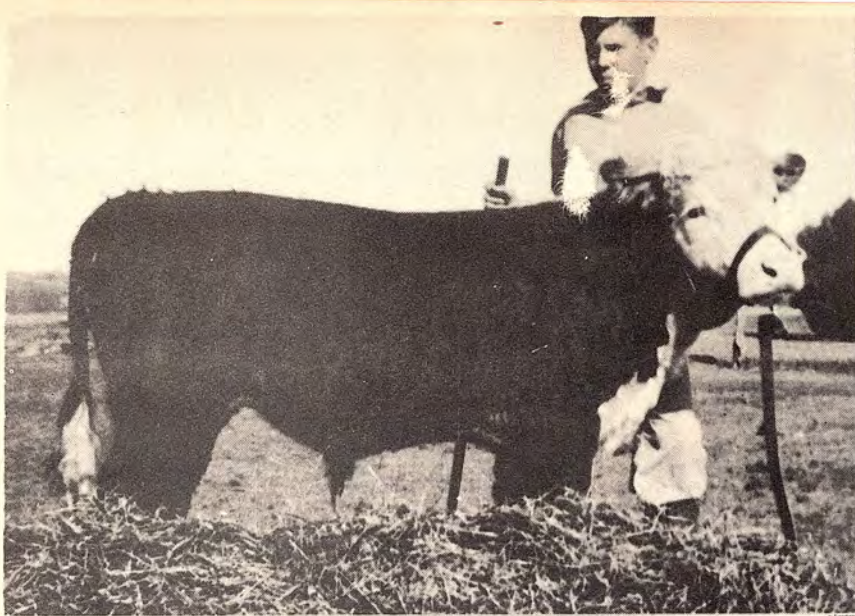
CARL AXE  
 P. M. BELT  
 CLIFTON BIDDLEMAN  
 LAUREL BITTLE  
 PETE BORCHARDT  
 GENE BURNS  
 HAROLD BURNS  
 BILLY BUHLER  
 EDWARD BURT  
 EDDIE BURTON  
 DOUGLAS BUTLER  
 JAMES CALDWELL  
 HARRY CABANISS  
 ARCHIE CAMPBELL  
 DON CAMPBELL  
 RICHARD COLDWELL  
 WILLIAM COMPTON  
 GERALD COOPER  
 TED CORNELIUS  
 GUY COUTHAN  
 FLOYD COYLE  
 TOMMY CRANFORD  
 THOMAS DANIELS  
 CHRIS DAUGHERTY

JOHN DAVALT  
 DENHAM DAY  
 JUINTEEN DEWOODY  
 CARL DRUM  
 GEORGE DRUM  
 GENE ERICKSON  
 JOHN ERICKSON  
 ELBERT ERLANSON  
 GEORGE FISHER  
 BILLY FORD  
 J. L. FORD  
 JOE FORD  
 C. O. GAULDEN  
 BILLY GRAHAM  
 ORVILLE GEREN  
 JERRY GRAHAM  
 CHARLIE GRANSTAFF  
 BOBBY GRIFFIN  
 GENE HARPER  
 JAMES HUFFAKER  
 HOMER JOHNSON  
 LEMUEL LANGLEY  
 JACKIE LEONARD  
 JIMMY LYONS

JOHN R. MARTIN  
 DENNIS MADDOX  
 GUY McCLUNG  
 RUFUS McCLUNG  
 BOBBY McDANIEL  
 JAMES McENTEE  
 ELDON MERRITT  
 BILL McKANNA  
 JOHN BOB MOTLEY  
 HOMER MYERS  
 PETE NELSON  
 JACK OGLE  
 ARDEN PAUL  
 GERALD PAYTON  
 DUANE PHY  
 BOBBY JOE PIKE  
 CLAUDE POINTS  
 JOE POOVEY  
 DON RAINES  
 EDGAR HOWARD RAINEY  
 ALTON ROAN  
 BILLY ROAN  
 JACKIE ROAN  
 TOMMIE JOE ROAN

ROBERT SANDEFER  
 DON SATTERWHITE  
 BILLY SEALS  
 GEORGE SCOGGINS  
 EDWARD SHAVER  
 JOHN SHAVER  
 WALTER SHAW  
 BOBBY SHIPLEY  
 PRESTON SHUGART  
 JAMES SIMMONS  
 JIMMY SKINNER  
 POINTZ SKIPWITH  
 EARNEST SPEARS  
 DONALD SPERLING  
 LELAND SPURLOCK  
 BILLY TAYLOR  
 VERNON THOMAS  
 W. M. WAGGONER  
 BOBBY WALLACE  
 JACK WHITSON  
 BILLY WHITSON  
 BOBBY WHORTON  
 FRANK WILLIAMS, JR.  
 TRUMAN WISEMAN





EDGAR HOWARD RANEY AND HIS BEEF CALF F.F.A. SWEETHEART JEANNE RAGLAND



BILLY TAYLOR AND REGISTERED DUROC GILT

JACKIE LEONARD AND HIS EWE



JACKIE LEONARD AND HIS LAMBS

GUY McCLUNG AND HIS BEEF CALF

worldwartwoveterans.org/garland-texas



# The Cotton Patch

King William Compton and Queen Virginia Wynn



[worldwartwoveterans.org/garland-texas](http://worldwartwoveterans.org/garland-texas)





# Homemaking Club



## HOME EC CLUB

[worldwartwoveterans.org/garland-texas](http://worldwartwoveterans.org/garland-texas)

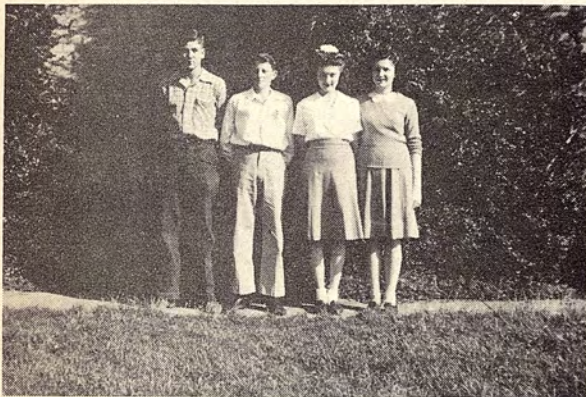
- |                     |                    |                     |                   |
|---------------------|--------------------|---------------------|-------------------|
| CLARA NELL ADAMS    | SHIRLEY COMPTON    | BERTHA LEE HUTSON   | JEANETTE SANFORD  |
| JACQUELINE ALLEN    | NELLIE CONNER      | LILLIE JO HENNING   | ELSIE SARVER      |
| ANNA JEAN ALSTON    | JERRY COOMER       | FONDA HYMAN         | JANELLE SCHRADÉ   |
| JOHNNIE ANDERSON    | LOUISE COOMER      | BERNICE JORDAN      | DOCIA SCHULTZ     |
| MURIEL ANDREWS      | COLLETA COON       | DOROTHY KEAHEY      | MINN ROSE SHELTON |
| BETTY SUE ARMSTRONG | JENNY SUE COOM     | PATRICIA KELLER     | GERALDINE SIMS    |
| MARIANNE BAILEY     | JEANE DICKSON      | BETTY KILLIAN       | BETTY SIMS        |
| MAXIE BAILEY        | NELDÁ DAVIS        | PATSY LUNA          | NORMA SMITH       |
| GERALDINE BAILEY    | MARY LOU DUNAWAY   | WANDA MADGE LEE     | WANDA JEAN STOVER |
| NANCY BAKER         | FLORENCE DUNN      | NANCY MacMILLAN     | GOLDA SPAINHOUER  |
| VIONA BALLARD       | VIOLA ELLIOT       | ANNE MADDOX         | EDNA SPERLING     |
| WYLENE BARNES       | MARIE EVANS        | MAYDELLE MARTIN     | WANDA THOMAS      |
| FRANCES BATES       | MARITA FLETCHER    | DORIS MAYBERRY      | ANNA TRAVIS       |
| BLANCHE BECHTOL     | JANELLE FLORENCE   | DELLA FAY McINTIRE  | VIRGINIA TRESP    |
| NORMA FAYE BELL     | MARY GOFF          | IDA MAE McINTIRE    | LUCILLE TROUSDALE |
| PATRICIA BENSON     | BETTY GOLLIHER     | DOROTHY NELL MELTON | DOROTHY VADEN     |
| ANNE BLASSINGAME    | FELICIA GOODSON    | DORIS MOORE         | EUJENIA VALLE     |
| EVELYN BLASSINGAME  | SHIRLEY ANN GRAVES | BETTY ANN MOOREHEAD | HELEN WAGNER      |
| JEAN BORCHARDT      | BOBBY GREER        | JUANITA MOSS        | MIGNON WAGONER    |
| VIRGINIA ANN BRAND  | JANE GREGORY       | WANDA JEAN NASH     | VIRGINIA WARD     |
| NANCY BRIGHT        | HAZEL GRISHAM      | LOIS NORLING        | MARY HILDA WARD   |
| NANCY BUSTER        | BERTHA HALL        | JOHNNIE OEHKLE      | BILLY JO WATKINS  |
| LAVERN BUTLER       | BERRY JEAN HALL    | JACKIE PARKS        | BILLIE WAKELAND   |
| ANN BURCH           | BETTY HAMILTON     | JUANITA PETTIS      | BILLYE WATT       |
| MARTHA JANE CAIN    | WYNELLE HARGIS     | LAVERNE PRICE       | MAY BETH WATSON   |
| BETTY SUE CARPENTER | EMMA LEE HARGROVE  | WANDA PUCKETT       | NIRA WEAVER       |
| JOAN CHAMBERS       | GEORGIA HARGROVES  | ZOE QUESSENBERRY    | DOROTHY WILLEFORD |
| LOUISE CHENAULT     | LUTHERINE HAYES    | BETTY ROBERTS       | SUE WINN          |
| VIRGINIA CLEVELAND  | EDNA HOLLEY        | JOY ROBERTSON       | TOMMIE WISEMAN    |
| PEGGY COCKRELL      | SUE HOLMES         | LILA FAYE ROSE      | MARY HELEN WRIGHT |
| ALVA RAE COMPTON    | CAROLYN HUGGINS    | MARY DEAN ROUTH     | ROY ANN WRIGHT    |
| RITA NELL COMPTON   | WANDA JEAN HUGHES  | CLARA RUDOLPH       | CATHERINE YANCY   |

LUCILE MacMILLAN, Sponsor



# Science Clubs

These clubs, which are organized as a vital part of the science classes in Garland High School, are affiliated with a national organization. They are designed to arouse interest in the study of science by our students.



"CLUB OF BIOLOGICAL STUDIES"

EDWIN GROVES, President  
LOUIS DANIELS, Vice-President  
JANECHA BELL, Secretary and Treasurer  
JEAN WYRICK, Assistant Secretary-Treasurer



BILLIE NICKELS  
Sponsor

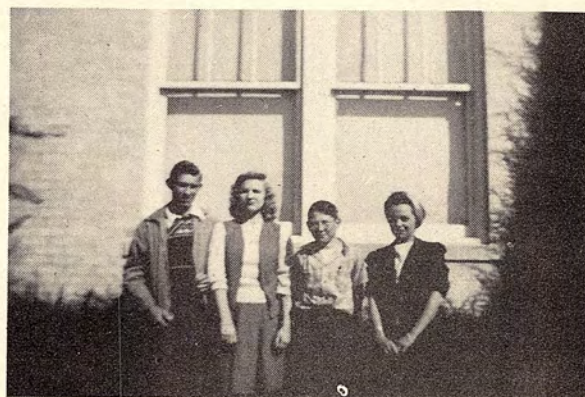
[worldwartwoveterans.org/garland-texas](http://worldwartwoveterans.org/garland-texas)



"STUDY OF NATURE'S WONDERS"

TREVLIN TICKNOR, President  
BUDDY STONE, Vice-President\*  
JIMMY CARLETON, Secretary-Treasurer\*  
DON SQUIBB, Reporter  
EDWARD HILL, Reporter

\*Not shown.



"BETTER SCIENTISTS OF TOMORROW"

JOE THOMSON, President  
BILLYE WATT, Vice-President  
BILLY SANDERS, Secretary  
PAT BENSON, Reporter  
JOYCE GOODMAN, Reporter\*



# English Clubs



ETHNA ANDERSON  
Sponsor

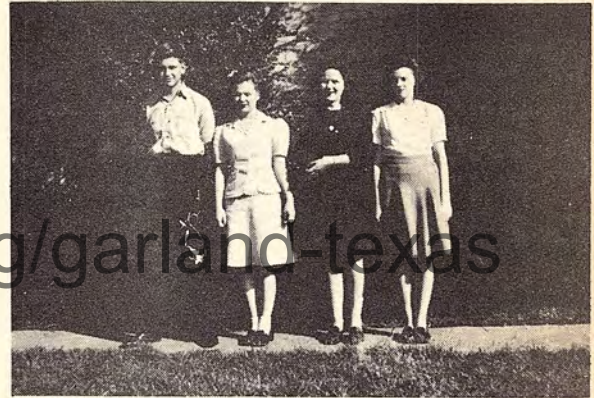
The organization of the Junior English classes, under Miss Anderson and Mrs. Whorton, was successfully carried out this year. These clubs were directed by enterprising students and were devoted to the encouragement of better English in the speaking and the writing of their members. They have become an essential part of the pattern of life in Garland High School and are thoroughly enjoyed by those students who have the privilege of taking part in them.



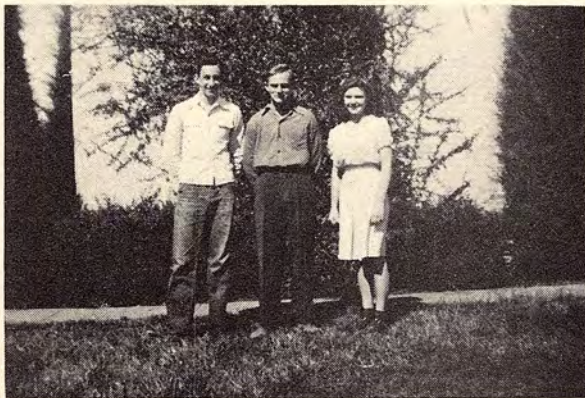
MABEL WHORTON  
Sponsor



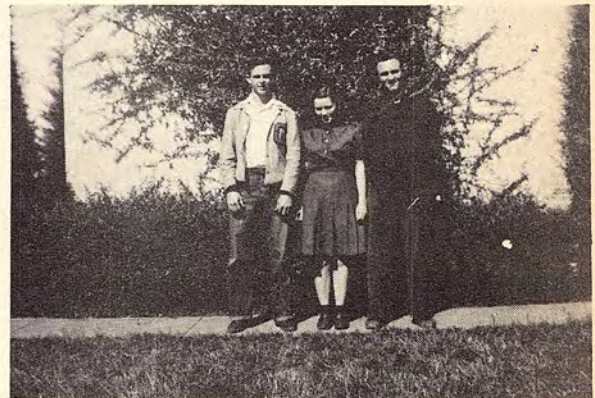
PEGGY WILLIAMS, President  
GEORGE DRUM, Vice-President  
BETTY ANN MOOREHEAD, Secretary  
MARY ANN KEELEY, Reporter



JAMES BUTCHER, President  
ANNE BLASSINGAME, Vice-President  
BOBBIE YARBOROUGH, Secretary  
WYLLENE BARNES, Reporter



JOHN HALL, President  
BILL FLOOK, Vice-President  
WANDA THOMAS, Secretary  
JACKIE SHUGART, Reporter\*



AUREL BITTLE, President  
TOMMIE WISEMAN, Vice-President  
CLAUDE POINTS, Secretary\*  
BILL MCKANNA, Reporter

\*Not shown:



# Spanish Clubs

THE STUDENTS OF GARLAND PARTICULAR INTEREST IN ANY ACTIVITIES WHICH ARE TION OF FRIENDSHIP BETWEEN STATES AND THEIR NEIGHBORS



LOUISE LEE  
Sponsor

HIGH SCHOOL HAVE SHOWN THEIR SPANISH CLASSES AND RELATED TO THE PROMOTHE PEOPLES OF THE UNITED SOUTH OF THE BORDER



"LOS COMPANEROS"

JAMES GIPSON, President  
LLOYD BOYD, Vice-President\*  
ADELLE HALL, Secretary  
BEVERLY KIRBY, Reporter



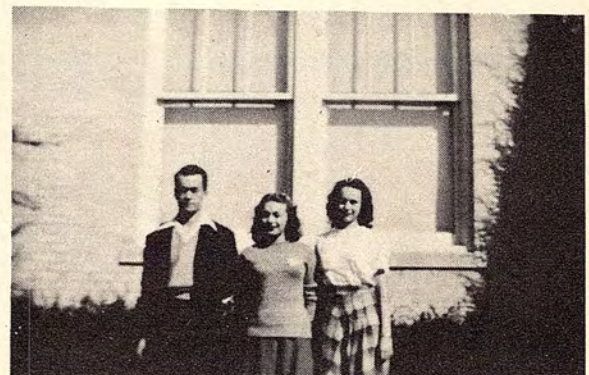
"LOS MOCHUELOS"

MARY DEAN ROUTH, President  
JEANNE WALLACE, Vice-President  
SARAH BETH BRADSHAW, Secretary  
MAY BETH WATSON, Reporter



"ESPIRITU ESPANOL"

JOE THOMPSON, President  
PHYLLIS HANDLEY, Vice-President  
GLORIA BUSSEY, Secretary  
BOYD HILL, Reporter\*



"EL CIRCULO HISPANAMERICANO"

HARRIS HILL, President  
BOBBY GIPSON, Vice-President  
JUANITA DOBBS, Secretary  
DOCIA SCHULTZ, Reporter

\*Not shown.



# Secretarial Training Club

THE SECRETARIAL TRAINING  
MISS HUNT IN THE COM-  
IN ORDER TO PROVIDE AN  
DENTS TO INCREASE THEIR  
BUSINESS



LOUISE HUNT  
Sponsor

CLUBS WERE ORGANIZED BY  
MERCIAL ARTS CLASSES  
INCENTIVE FOR THE STU-  
KNOWLEDGE OF MODERN  
PRACTICES



"SIGMA TAU"

BOBBY GRIFFIN, President    JEANNE RAGLAND, Secretary  
JO NEWMAN, Vice-President    FRANCES BATES, Reporter



"TAU BETA PI"

MONTA CHANEY, Vice-President    PHYLLIS HANDLEY, Secretary  
DOROTHY HALL, President    GLORIA BUSSEY, Reporter

worldwartwoveterans.org/galland-texas

W  
V  
O  
T  
E

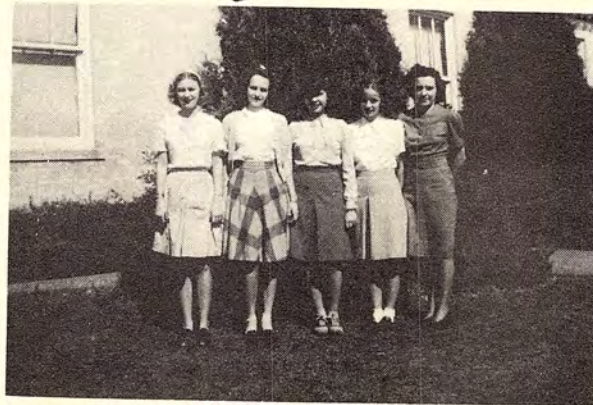
W  
V  
O  
T  
E

H  
B  
P

H  
B  
P



# Horizon Club



JEANNE RAGLAND, President      PHYLLIS HANDLEY, Secretary  
 DOCIA SCHULTZ, Vice-President      NANCY MacMILLAN, Reporter  
 MARIE HARRISON, Sponsor



NANCY BRIGHT  
 PEGGY BRIGHT  
 JERRY COOMER  
 JANE GREGORY  
 JANE GUSTAFSON  
 PHYLLIS HANDLEY

BELVA JEAN HAYNES  
 SUE HOLMES  
 MARY ANN KEELEY  
 NANCY MacMILLAN  
 MARTHA NELSON  
 ZOE QUESSNBERRY

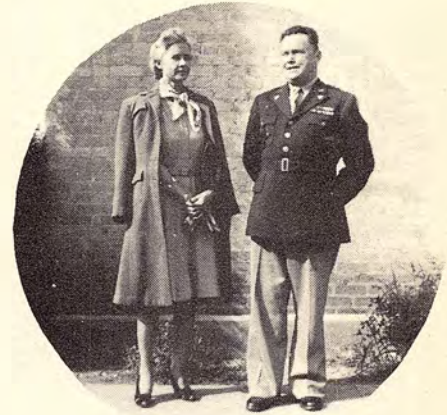
JEAN RAGLAND  
 ELSIE SARVER  
 DOCIA SCHULTZ  
 MAYBETH WATSON  
 NIRA WEAVER  
 PEGGY WILLIAMS



# Assemblies



The Senior Class presented a "Kay Kyser" quiz program on October 4.



Lt. Col. and Mrs. John J. Deane



Cotton King William Compton and Cotton Queen Virginia Wynn.



The Junior Class on November 10 held the Coronation of the Cotton King and Queen. Lt. Col. John J. Deane addressed the student body.



The Sophomore Class presented a Christmas program on December 22.



The Freshman Class program on January 5 featured a "melodrama," "fashion parade," and skits based on popular song hits.



# Flag Bearers

ROUAM MURD



M J O O R W H H M



worldwartwoveterans.org/garland-texas

G H  
S

MONITA CHANEY

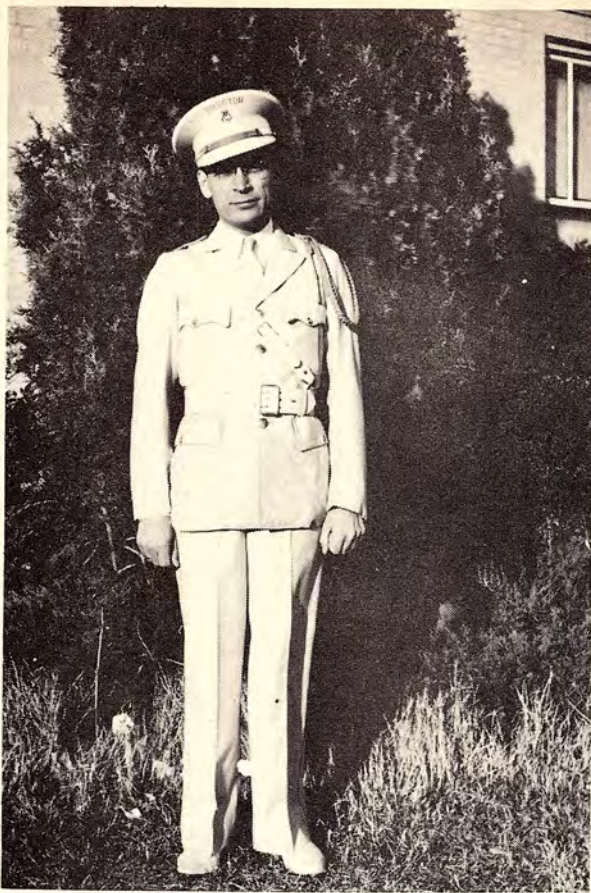
JEANNE RAGLAND

NANCY MOTLEY

JANE GREGORY

PEGGY BRIGHT





HOWARD TAYLOR  
Director

# Band



Paul Manning, President      Phyllis Handley, Secretary  
Gloria Bussey, Vice-President      Jo Newman, Reporter

[worldwartwoveterans.org/garland-texas](http://worldwartwoveterans.org/garland-texas)



MAURICE ALLEN  
KENNETH BATES  
JANECIA BELL  
THOMAS BROWNING  
GLORIA BUSSEY  
JOE BOYD  
MONITA CHANEY  
LEON CLARK  
NITA FAYE GARRISON  
BILLY GRAHAM  
JOLLY GRUBBS

PHYLIS HANDLEY  
LENA FAYE HARRIS  
KENNETH HART  
SHIRLEY HARLEY  
EDWARD HILL  
HARRIS HILL  
JAMES JOHNSON  
PRESTON KARRICK  
PAUL MANNING  
DAN MINAHAN  
GAYLORD MacMILLAN

JO NEWMAN  
JOHNNIE OEHKE  
ALLEN OLIVER  
PAUL PENDERGRAFT  
DON PHILLIPS  
JEAN RAGLAND  
PAULINE RANKIN  
JOHNNY ROUTH  
JOHN RANGE  
JAMES SCHAFER  
JOYCE SENKEL

BOBBY SPENCE  
ROBERT SMITH  
BOBBY MAC STRINGER  
BRADLEY TOLAND  
LYLE TUCKER  
CARL TURNER  
DON WALSH  
BOBBY WINN  
MARITA WISEMAN  
MARTHA YARBOROUGH  
SARAH JO YOUNG



Gold Brigade Sponsor

M  
A  
J  
O  
R  
I  
T  
H  
E



M  
A  
J  
O  
R  
I  
T  
H  
E

worldwartwoveterans.org/garland-texas

G  
H  
S



CORKY WYNN



PEGGY WILLIAMS

MARIANNA BRADY



# Gold Brigade



CHEER LEADERS

MARTHA NELSON  
PEGGY WILLIAMS

TERRY DEANE  
CORKY WYNN

[worldwarveterans.org/garland-texas](http://worldwarveterans.org/garland-texas)







# ANNUAL CHRISTMAS PAGEANT



"The Story of the Christ Child," a pageant with more than one hundred students taking part, was presented again this year, in the auditorium gymnasium, on the evening of December 19, 1944, at eight o'clock.

The readers for the pageant were Ida Ferrell Harvey and Richard Roach. Janecia Bell and Colleta Coon were soloists, and Monita Chaney was accompanist for the entire evening. Gloria Bussey played the part of Mary, the mother of Jesus, and Charles Cabaniss played the part of Joseph.

**SHEPHERDS:** Jim Gregory, Claud Points, Arden Paul, John Bob Motley, Bobby Griffin, Preston Shugart.

**THREE WISEMEN:** Jack Sealy, Gaylord MacMillan, Dan Minahan.

**ANGELS:** Vanda Bowen, June Heath, Frances Bates, Peggy Bright, Jeanne Ragland, Mary Goff, Wanda Jean Oliver, Bennie Sue Billington.

**CAROL SINGERS:** Betty Gollither, Rose Mary Robards, Corky Wynn, Loyse Morphis, Phyllis Handley, Juanita Mitchell, Betty Ruth, Boveta Mitchell, Emma Lee Hargroves, Edwin Williams, Paul Manning, Docia Schultz, Reba Fern Smith, Joyce Goodman, Nancy Bright, Terry Deane, Edward Wilson, Wanda Madge Lee, Nell McCallum, Billie Yarborough, Virginia Ann Brand, Maureen Reilly, Marvin Rogers, Sue Holmes, Ida Mae McIntire, Bill Vance, Jackie Parks, Mary Evelyn Drum, Lena Faye Harris, Bill Grady Burlison, Mary Hilda Ward, Beverly Kirby, Wanda Jean Hughes, Colleta Coon, Shirley Ann Graves, Harris Hill, Martha Cain, Nancy Baker, Jo Newman, Rose Shipley, May Beth Watson, Nira Weaver.

**SOLDIERS:** Cecil Flook, John Richard Scott, Louis Wiggins, Carl Dickson, Tommy Cranford, Billy Taylor, Billie Bates, W. A. Burt, Bobby Bradfield, J. L. Ford, Alva Lee Herring, J. W. Nelson, Jerry Graham, Pryor Winn, Clifton Biddleman, Jim Lyons, Boyd Hill, Bill Vance, Billy Flook, Andrew Haynes, Johnny Hyman, Leslie Durloo, Poyntz Skipwith.

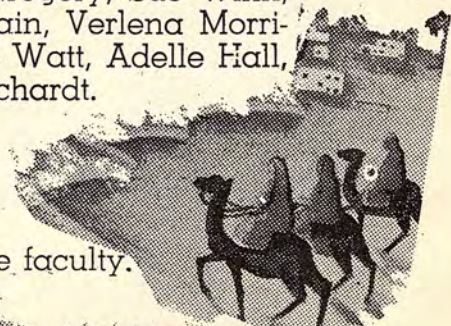
**NURSES:** Peggy Williams, Willene Easterly, Jerry Coomer, Dorothy Lou Hall, Jeanne Carpenter, Jane Gregory, Sue Winn, Wanda Thomas, Dorothy Onstott, Eunice Cain, Verlana Morrison, Nita Faye Garrison, Elsie Sarver, Billye Watt, Adelle Hall, Nancy MacMillan, Eugenia Valle, Jean Borchardt.

## DIRECTORS

Miss Anderson

Miss Nickels

Assisted by all other members of the faculty.



worldartwveterans.org/garland-texas





workartworld.com/garland-texas

Sports 1





JERRY SELLERS  
Coach



MARSHALL VANDERBURG  
Asst. Coach

# GARLAND OWLS '44



BOBBY GRIFFIN  
Co-Captain

The Garland Owls, defending Regional Champions, opened their 1944 season with a 14-0 win over the strong Van Alstyne eleven. The team lost the services of Jim Gregory, guard, for the next seven games as his arm was broken during the game.

The injury plagued Garlandites were fought to a 6 to 6 tie by the veteran Rockwall Yellowjackets in their second start.

Still hampered by injuries and frequent penalties, the Owls won a 13-0 decision over the light but scrappy Plano Wildcats.

The Owls downed their first district opponent, Pleasant Grove, 27-0. Motley contributed two touchdowns to the total, Griffin a touchdown and an extra point, Compton a touchdown, and Paul two extra points.

The Mesquite eleven was fast and deceptive, but even their inspired play was not enough to stop the Owls, who won 20-12. Caldwell and Williams each scored for the opponents; while Griffin scored one, passed to Ford for another, and Motley added the third marker, Paul converted twice.

Emmet Jordan's Kaufman Lions were the next opponents to feel the Owls talons, losing 33 to 7. Sebron Hall was lost to the team for the remainder of the season when his ankle was broken during the game.

The Owls found little opposition on their journey to Irving except in the third quarter when Lee scored on a pass. The rest of the game was all Garland with the final score standing 47-6. Griffin and Motley each scored two six-pointers, with Shugart, Bittle, and Devault adding one apiece. Paul dropped four extra points between the uprights, and Shugart passed to Sperling for another.

Garland enjoyed a field day as they trounced Decatur 45-6.

REGION 4 CHAMPIONS for the second consecutive year and for the second time since Garland entered the Class A ranks, this was the distinction gained by the "Fighting Owls" of 1944. Under the guiding hand of Jerry Sellers, head coach who also led last year's team to the championship, and Marshall Vanderburg, this year's eleven completed the first season in Class A in which a Garland team was unbeaten on the field. The only blemishes on their record were the ties with Rockwall and Nocona, both of whom were strong, but under normal conditions the Owls were probably two touchdowns superior to either.

The Garlandites piled up 130 points to 18 for their opponents in winning five district encounters. In five intra-district games they scored 111 points to 19 for their opponents to gain four wins and a tie. In the two championship frays they beat Royse City for the Bi-District 13-0, and Nocona three penetrations to two after the score was deadlocked 13-13.

The backfield was one of the best quartets ever to "lug the leather" for Garland on the gridiron. The all around play of Griffin, who excelled in passing and punting, and was a deadly broken field runner, plunger, and off-tackle smasher, sparked the backfield. Motley was (together with Griffin) the district's most feared broken field runner, could punt, and go through holes in the line that larger players couldn't find. Shugart's passing and mauling line plunges were invaluable. Bittle was the top pass receiver and a fine blocker. In the line the bull-like play of Charlie Granstaff at tackle and the consistency of Johnson and Paul were predominant.

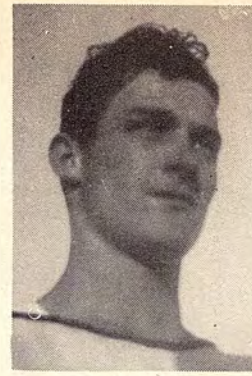
When the All-District eleven was selected, Bobby Griffin in the backfield and Granstaff, J. L. Ford, and Jim Gatewood at tackle, end, and guard, respectively, were placed on it. Homer Johnson, center; Arden Paul, end; Jim Gregory, guard; and Shugart and Motley, backs, received honorable mention.





JOHN BOB MOTLEY  
Co-Captain

# REGION 4 CHAMPIONS



BOYD HILL  
Manager



CECIL FLOOK  
Manager

Some 2,000 fans witnessed the fastest and most bitterly fought contest of the season as Garland stopped Grand Prairie 6-0. The only score of the game came on a sustained drive of 70 yards led by Motley's 27 yard smash, that ended with Griffin's plunge for the score. A fourth down pass from Quinlan to Young in the end zone was slapped down by Griffin as the game ended.

With both teams having undefeated records, and the district championship at stake, Garland smashed Carrollton 30-0 on the Lions' muddy home field. The game had been called a toss-up, but Shugart's mauling plunges and Griffin's and Motley's slashing, spinning runs routed their heavier opponents. The aggressive Owl line stopped Coldwell to hold the Lions scoreless while Griffin scored two and Paul, Devault, and Bittle each made one touchdown.

In the Bi-District fray, the Garland team successfully stopped an early Royse City drive to the 2 foot line and went on to gain a 13-0 decision on a muddy gridiron. Griffin scored both touchdowns and passed to Shugart for an extra point.

Favored to take their second consecutive Region 4 Championship when they met the Nocona Indians, the Owls were forced to win the title on penetrations. After kicking off to Nocona, Garland took the ball on their own 32 yard line when the Indians punted, after failing to make a first down. In six plays, sparked by Griffin's 50 yard break-away run, the Owls tallied with Griffin plunging over from one-yard out.

Nocona then took the kickoff on their own 35 yard line and marched 65 yards to pay dirt with Keck doing most of the ball carrying.

Bittle returned the kickoff to the Owl 30 yard line, and the march began again. Motley's 15 yard sprint gained a first down, and Griffin's pass to Bittle was completed to the 7 yard line. Motley gained six, and Griffin scored. Griffin passed to Shugart for the extra point.

Nocona came right back with a 71 yard march after the kickoff. The Redskins' "T" formation clicked once more as they tied the score 13-13.

The Owls outplayed the Indians in the second half but were unable to score. The "play of the year" came in the closing seconds of the game when, with the ball on Nocona's 45 yard line, Griffin called a fake kick. Instead, he passed to Motley, who carried to the 19 for the third and deciding penetration. Garland held an advantage in the statistics of 270 yards to 140 yards gained from scrimmage for Nocona, and 13 first downs to the Redskins' 11.

worldwveterans.org/garland-texas



# REGION 4 CHAMPIONS



Left to right, first row: Rufus McClung, Jim Gatewood, J. L. Ford, Jack Ogle, Aurel Bittle, Preston Shugart, Homer Johnson, Bobby Griffin, John Bob Motley, Charlie Granstaff, Arden Paul; second row: William Compton, Jim Gregory, Bill Flook, Elmer Grisham, Jackie Shugart, John Hall, Charles Cabaniss, W. A. Burt, Bill McKanna, Robert Sandefer, John Davault; third row: Boyd Hill, manager; Jerry Sellers, coach; Douglas Butler, Edwin Groves, Donald Sperting, Carl Ace, George Fisher, Eldon Merritt, Billy Seats, Cecil Flook, manager.

worldveterans.org/garland-texas

## GARLAND OWLS, 1944

### SEASON RECORD

Sept. 15	Van Alstyne	0 G 14
Sept. 22	Rockwall	6 G 6
Sept. 29	Plano	0 G 13
Oct. 6	Pleasant Grove	0 G 27
Oct. 13	Mesquite	12 G 20
Oct. 20	Kaufman	7 G 33
Oct. 27	Irving	6 G 47
Nov. 3	Decatur	6 G 45
Nov. 10	Grand Prairie	0 G 6

### DISTRICT CHAMPIONSHIP

Nov. 24	Carrollton	0 G 30
---------	------------	--------

### BI-DISTRICT CHAMPIONSHIP

Dec. 8	Royse City	0 G 13
--------	------------	--------

### REGIONAL CHAMPIONSHIP

Dec. 15	Nocona	13 G 13
---------	--------	---------



# GARLAND OWLS - '44

## REGULARS



MOTLEY, FB

BITTLE, RH

SHUGART, LH

GRIFFIN, QB

FORD, RE

JOHNSON, C

PAUL, LE

McCLUNG, RT

GATEWOOD, RG

OGLE, LG

GRANSTAFF, LT

[worldwartwoveterans.org/garland-texas](http://worldwartwoveterans.org/garland-texas)

## RESERVES



DAVAULT, FB

FLOOK, RH

AXE, LH

COMPTON, QB

SPERLING, RE

SHUGART, C

CABANISS, LE

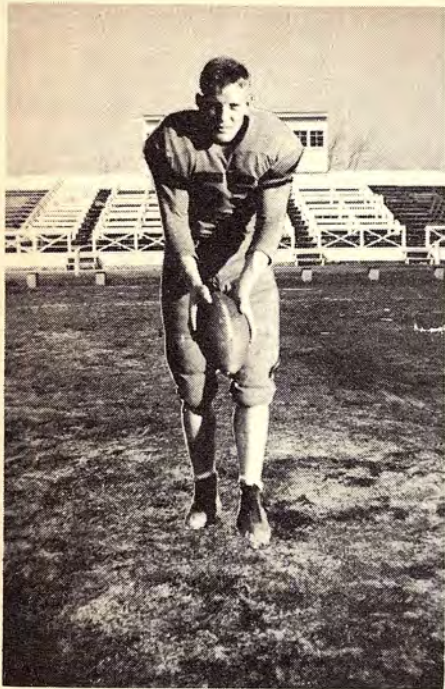
GRISHAM, RT

SANDIFER, RG

McKANNA, LG

MERRITT, LT





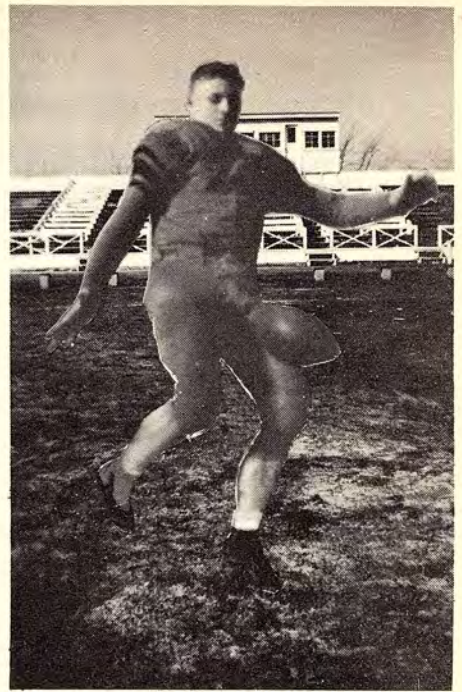
**BOBBY GRIFFIN**

Back; Letter 2, 3, 4; Wt. 170 lbs.; Ht. 5' 9";  
All District 4; Hon. Men. 3; Most Valuable  
Player 3



**CHARLIE GRANSTAFF**

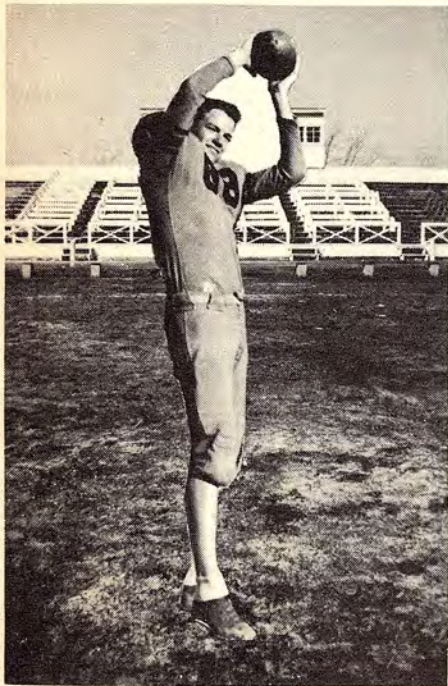
Tackle; Letter 2, 3, 4; Wt. 185 lbs.; Ht. 6';  
All District 3, 4



**JOHN BOB MOTLEY**

Back; Letter 2, 3, 4; Wt. 160 lbs.; Ht. 5' 8½";  
All District Hon. Men. 4

worldwarpoveterans.org/garland-texas  
GARLAND OWLS - 44



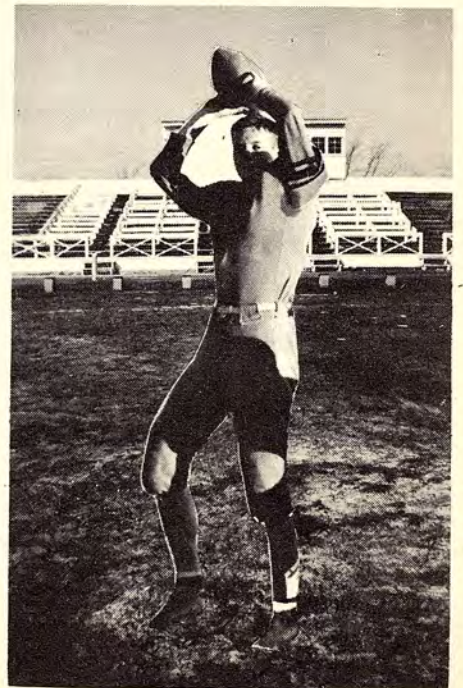
**ARDEN PAUL**

End; Letter 3, 4; Wt. 160 lbs.; Ht. 6' 1";  
All District Hon. Men. 4



**JIM GATEWOOD**

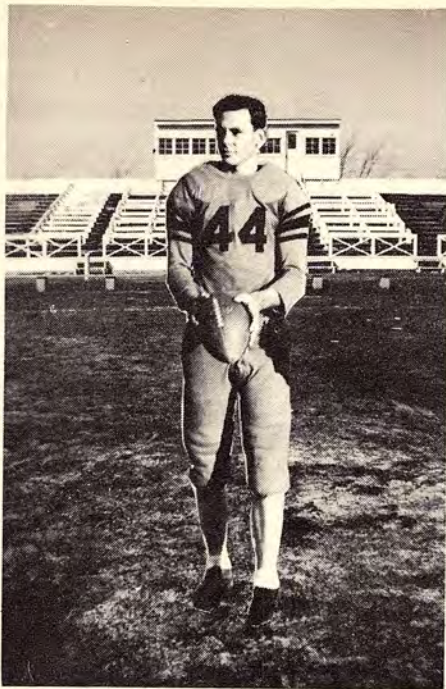
Guard; Letter 2, 3; Wt. 153 lbs.; Ht. 5' 10";  
All District 3



**J. L. FORD**

End; Letter 3, 4; Wt. 160 lbs.; Ht. 6' 2";  
All District 4





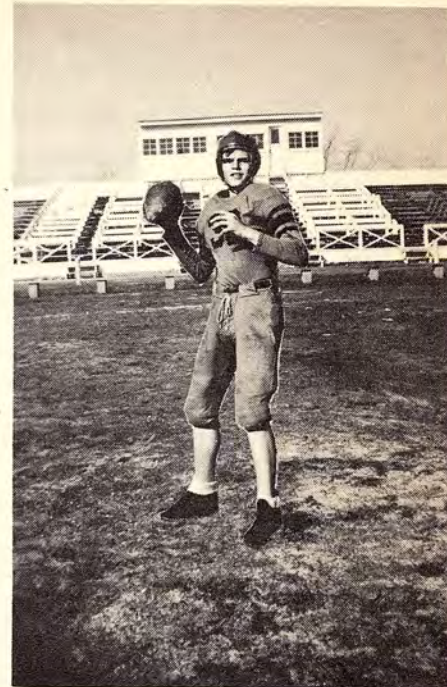
AUREL BITTLE

Back; Letter 2, 3; Wt. 153 lbs.; Ht. 5' 10"



HOMER JOHNSON

Center; Letter 2, 3, 4; Wt. 165 lbs.; Ht. 5' 10";  
All District Hon. Men. 4



PRESTON SHUGART

Back; Letter 3, 4; Wt. 170 lbs.; Ht. 6';  
All District Hon. Men. 4

# worldwide REGION 4 CHAMPIONS Texas



RUFUS McCLUNG

Tackle; Letter 3, 4; Wt. 165 lbs.; Ht. 6";  
All District Hon. Men. 4



WILLIAM COMPTON

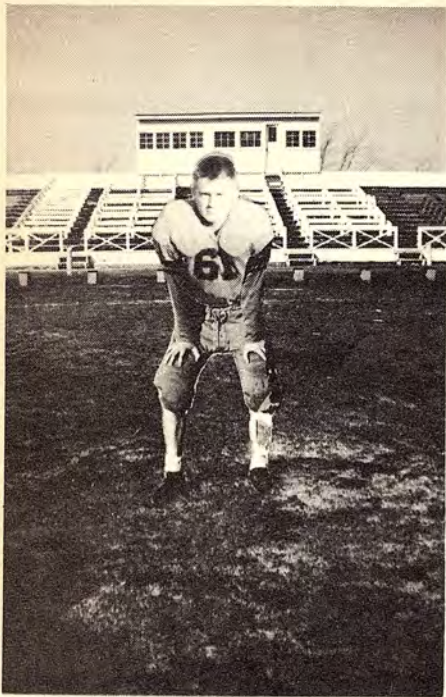
Back; Letter 3, 4; Wt. 140 lbs.; Ht. 5' 8½"



JIM GREGORY

Guard; Letter 3, 4; Wt. 160 lbs.; Ht. 5' 9";  
All District Hon. Men. 4





**JOHN DAVALT**  
Back; Letter 4; Wt. 135 lbs.; Ht. 5' 7½"



**JACK OGLE**  
Guard; Letter 3,4; Wt. 163 lbs.; Ht. 5' 9½"



**SEBRON HALL**  
End; Letter 2, 3; Wt. 150 lbs.; Ht. 5' 9½"

*Garland Crews* 44  
worldwar2veterans.org/garland-texas



**ELMER GRISHAM**  
Tackle; Letter 4; Wt. 210 lbs.; Ht. 5' 10"



**CHARLES CABANISS**  
End; Leter 3, 4; Wt. 160 lbs.; Ht. 6'



**BILL MCKANNA**  
Guard; Letter 1, 2, 3; Wt. 155 lbs.; Ht. 5' 9"





ROBERT SANDIFER

Guard; Letter 4; Wt. 150 lbs.; Ht. 5' 8"



JACKIE SHUGART

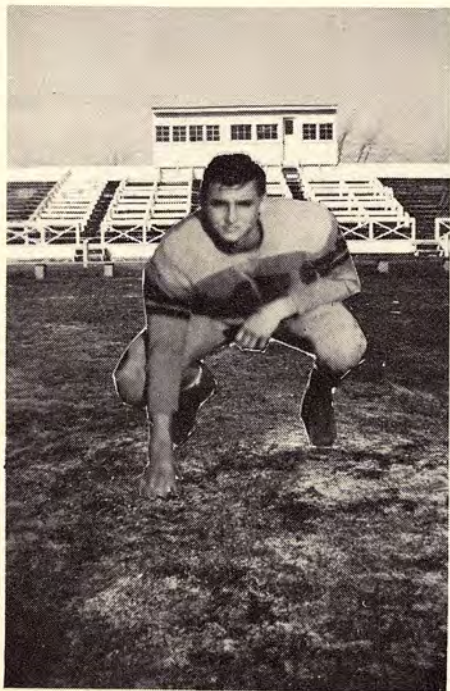
Center; Letter 3; Wt. 145 lbs.; Ht. 5' 8"



CARL AXE

Back; Letter 4; Wt. 150 lbs.; Ht. 5' 9"

# Region 4 Champions



DONALD SPERLING

End; Letter 4; Wt. 150 lbs.; Ht. 5' 10"



ELDON MERRITT

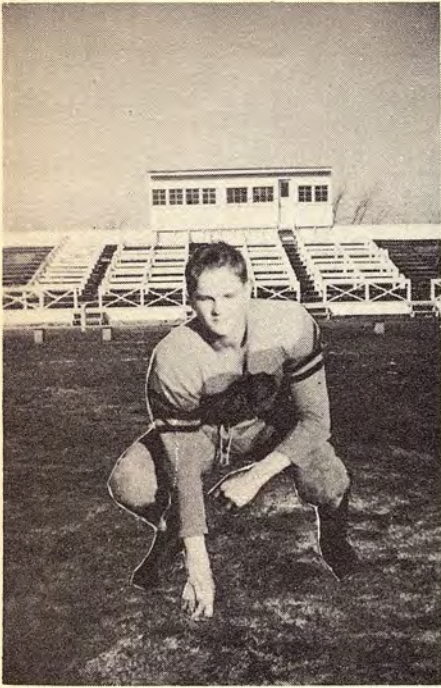
Tackle; Letter 3; Wt. 200 lbs.; Ht. 5' 9"



JOHN HALL

End; Letter 3; Wt. 165 lbs.; Ht. 6' 1/2"





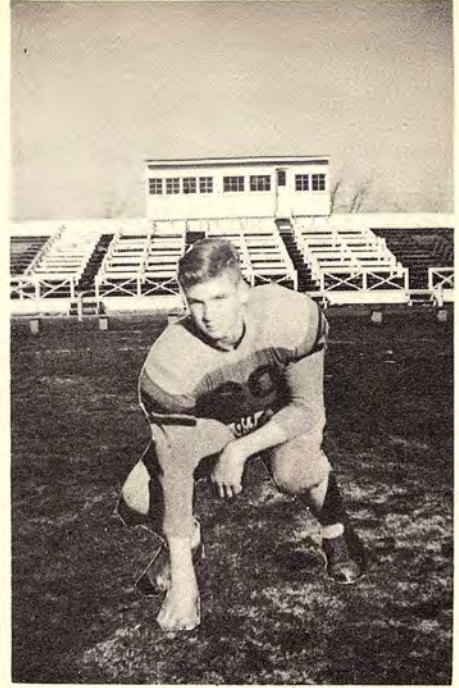
ALVIN OEHKE

Back; Letter 1; Wt. 140 lbs.; Ht. 5' 7"



W. A. BURT

Center; Letter 3; Wt. 150 lbs.; Ht. 5' 10"



EDWIN GROVES

Tackle; Letter 2; Wt. 150 lbs.; Ht. 6'

*Garland Bulls '44*  
worldwarveterans.org/garland-texas



DOUGLAS BUTLER

Tackle

Wt. 150 lbs.  
Ht. 5' 9½"

BILLY SEALS

End

Wt. 130 lbs.; Ht. 5' 8"



BILL FLOOK

Back; Letter 2, 3; Wt. 155 lbs.; Ht. 5' 9"



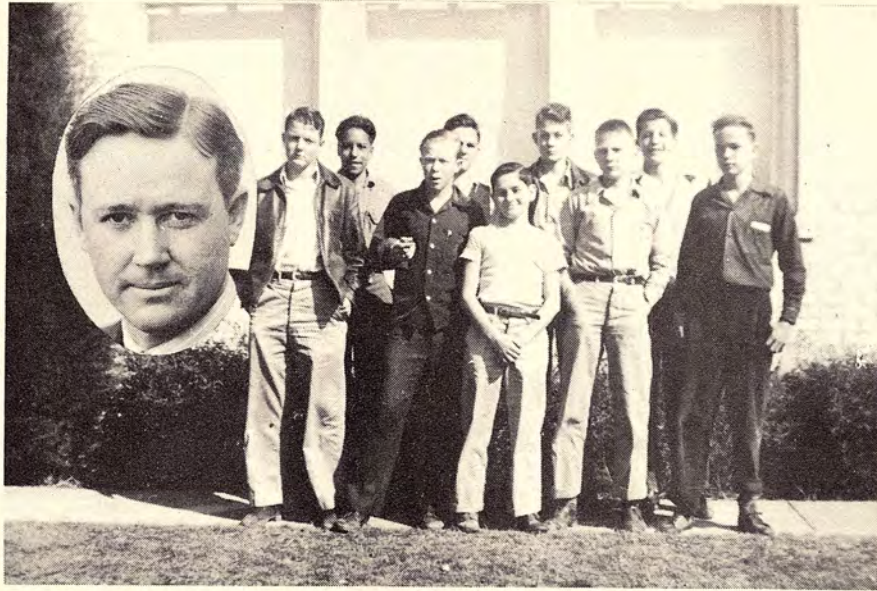
GEORGE FISCHER

Guard; Wt. 133 lbs.; Ht. 5' 8½"



# GARLAND "RINKS"-'44

Inset:  
Coach  
Marshall  
Vanderburg



Left to right: Jesse James, Jose Valle, Carl Dickson, Alvin Oehlke, Gene Erickson, Jerry Graham, Don Range, John Owens, and Tommy Chandler.

## SEASON RECORD

Plano . . 19	6	13	Plano . . 7	6	20	Rockwall . 6	6	13
Plano . . 18	6	7	Plano . . 12	6	20	Rockwall . 7	6	7

[worldwartwoveterans.org/garland-texas](http://worldwartwoveterans.org/garland-texas)







Left to right, first row: Jerry Sellers, Coach, Jackie Shugart, Bobby Griffin, Arden Paul, captain, J. L. Ford, Preston Shugart, Charles Cabaniss, Aurel Bittle. Second row: Roy Lee Mullins, Alva Lee Herring, Boyd Hill, John Hall, Homer Johnson, Jack Sealy, John Owens, Eddie Burton.

## BOYS' BASKETBALL

INCONSISTENT. This one word sums up the achievements of the 1945 Owl cagers. Beginning the season with five veteran lettermen, Griffin and Paul, forwards Cabaniss and Bittle, guards, and Ford, center, the team could well have been Garland's second district championship squad, if that missing "something" had been with them. After being nosed out in their second start, 31-28, by the highly favored Grand Prairie Gophers, the prospect of becoming the district's best team seemed only a matter of time; perhaps the Owls thought a little too much about this, who knows? Certainly luck was against them in their final district game with those same Gophers, when, with the prospect of a first place tie depending on a win, not one of the team was "hot on the basket" as all missed set-ups and free throws galore.

Despite the big "ifs" which kept this year's team from the championship, they nevertheless set several records for the cage sport in Garland. Their standing of 18 wins and 8 losses for a .792 percentage was a new won-lost percentage record. Their 35 points per game average was an improvement of 5 points on the '44 average, while they maintained the defensive average of 29 points per game for opponents.

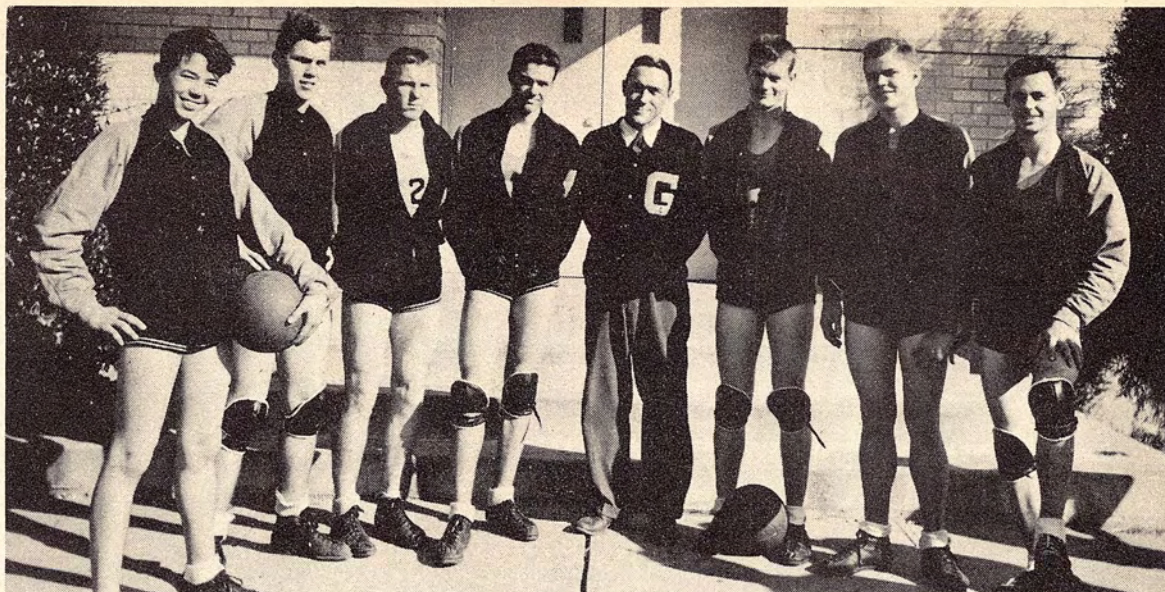
At midseason two squadmen, Preston and Jackie Shugart, had progressed sufficiently that Preston replaced Ford as the starting center, and Jackie began starting more often than Bittle at a guard position. This line up continued to win the high percentage of games that the first of the season had witnessed. For the first time since the cage rivalry began between the two schools, Garland swept a home and home series from the Plano Wildcats. The Owls beat Plano, District 16-A champs, by six points in both games; the same margin that the state runnerups, Quinlan, dropped the Wildcats in the regional tournament. This year's quintet also stopped the Buckner Hornets, 41-39, for the first time since 1942.

Other notable victories were a 37-25 taming of the rampaging Forney quintet, District 30-B champions, and three wins over the strong Pleasant Grove combine. The win over Forney was in the Oak Cliff "Y" Tournament in which the Owls advanced to the semi-finals before losing to Adamson (Dallas) 35-22. Jackie Shugart was placed on the highly coveted All "Y" Tournament team. Playing Jesuit of Dallas, the Owls were tied with the Rangers 33-all at the end of the fourth period; but, weakened by the loss of three regulars via the foul route, they lost in the overtime 38-35. Garland annexed the Seagoville Tournament championship for the second consecutive year by bumping Mesquite 51-35 in the finals. Playing three games in one day, the Owls had scored 148 points to dominate the torney and placed Arden Paul on the all-tournament team.



JERRY SELLERS  
Coach





### REGULARS

Left to right: Jackie Shugart, Charles Cabaniss, Bobby Griffin, Arden Paul, captain, Jerry Sellers, Coach, J. L. Ford, Preston Shugart, Aurel Bittle.

In the district race Garland finished in third place behind Grand Prairie and Buckner. They had a record of 9 wins against three losses, two games behind the leading Grand Prairie quintet. Their brightest success in the district was a 41-39 win over the Buckner cagers in an overtime frey. This win knocked the Hornets out of a first place tie and gave the Owls a chance at the district title, but they failed to take the Gophers in their final tilt. At the end of the season Arden Paul was honored by being elected captain by his teammates for the past campaign and was also chosen on the All-District five.

worldwoveterans.org/garland-texas

### SEASON STATISTICS—1945

#### Team Scoring

Games	Won	Lost	Percent	Garland	Opponents
Conference	9	3	.741	Total Points	
Tournament	5	3	.625	914	755
Full Season	18	8	.792	Average per Game	
				35	29

### INDIVIDUAL SCORING

Player	Total Points	Games	Average Game	Single Game	Points
Arden Paul	203	(25)	8.12	P. Shugart (Mesquite)	17
Bobby Griffin	154	(26)	5.92	Paul (Mesquite)	16
Jackie Shugart	144	(25)	5.76	Paul (Pleasant Grove)	16
Preston Shugart	124	(23)	5.39	P. Shugart (Red Oak)	16
Aurel Bittle	89	(26)	3.42	Paul (Pleasant Grove)	14
Charles Cabaniss	26	(26)	1.00	J. Shugart (Forney)	14
J. L. Ford*	84	(13)	6.46	Paul (Buckner)	14
				Ford (Seagoville)	14

\*Quit at mid-season.



ARDEN PAUL  
Captain

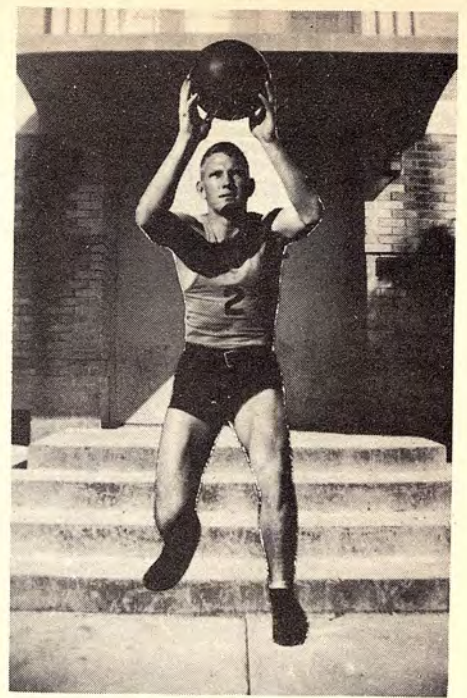




Forward ARDEN PAUL Letter 3, 4  
All District 4



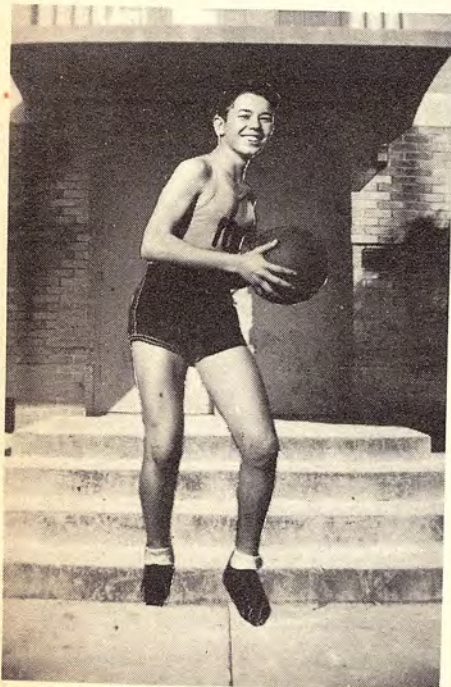
Center PRESTON SHUGART Letter 4



Forward BOBBY GRIFFIN Letter 2, 3, 4  
All District 2, 3

# GARLAND

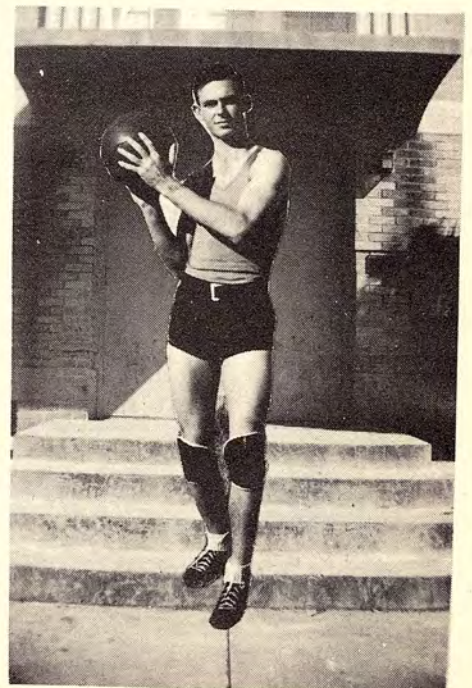
[worldwartwoveterans.org/garland-texas](http://worldwartwoveterans.org/garland-texas)



Guard JACKIE SHUGART Letter 3



Guard CHARLES CABANISS Letter 3, 4



Guard AUREL BITTLE Letter 2, 3

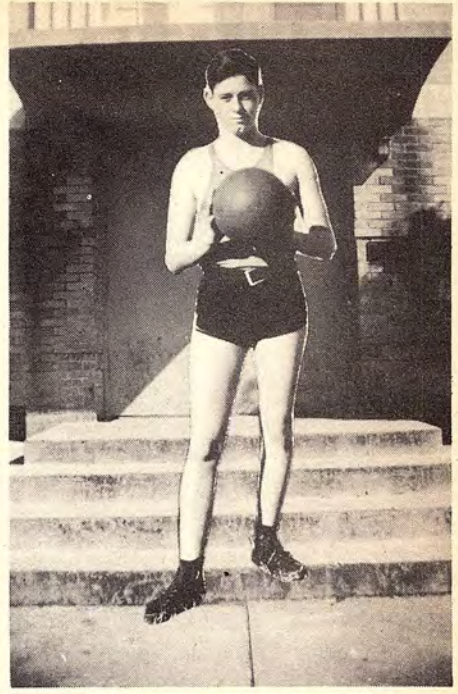




Center  
J. L. FORD  
Letter 2, 3



BOYD HILL  
Guard

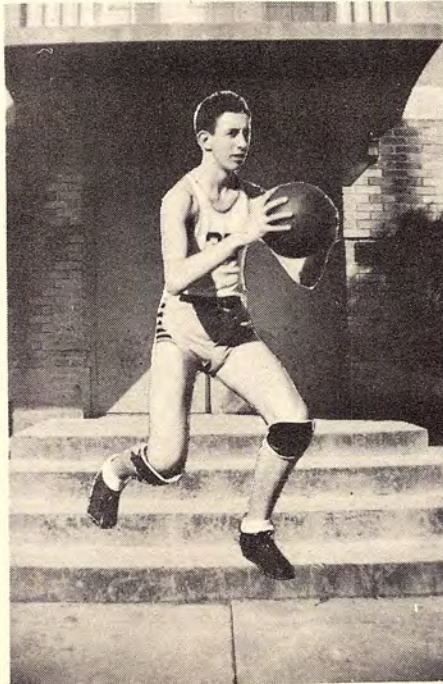


HOMER JOHNSON  
Forward

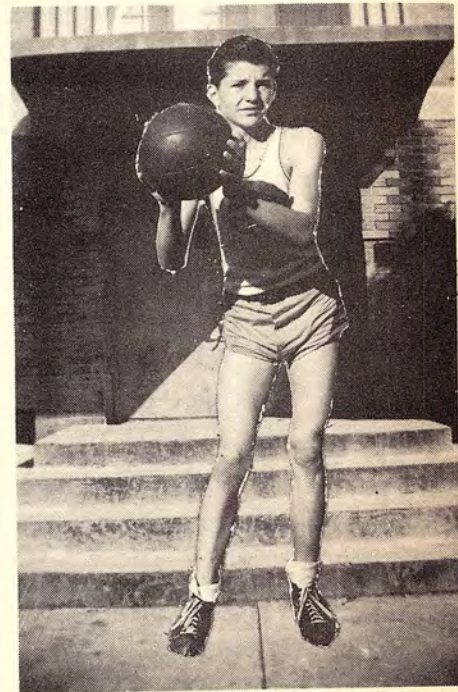
OWLS '45  
worldwartwoveterans.org/garland-texas



JACK SEALY  
Guard

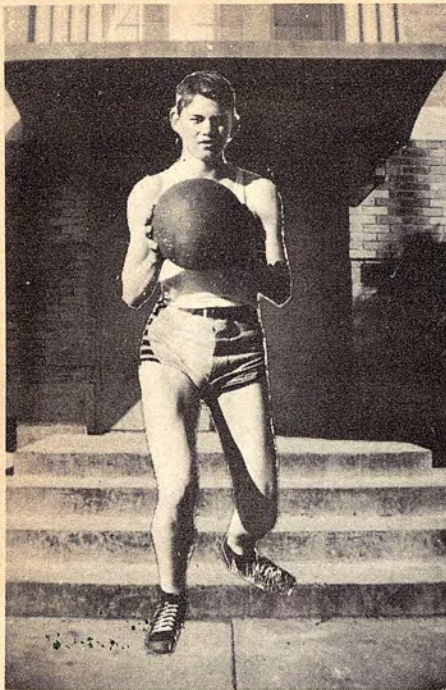


JOHN HALL  
Center

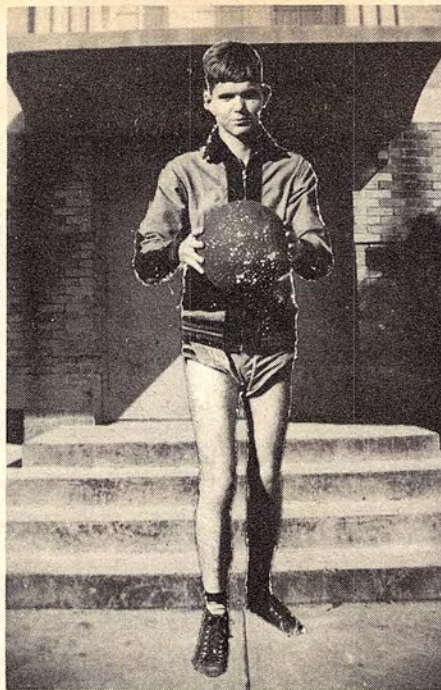


JOHN OWENS  
Forward

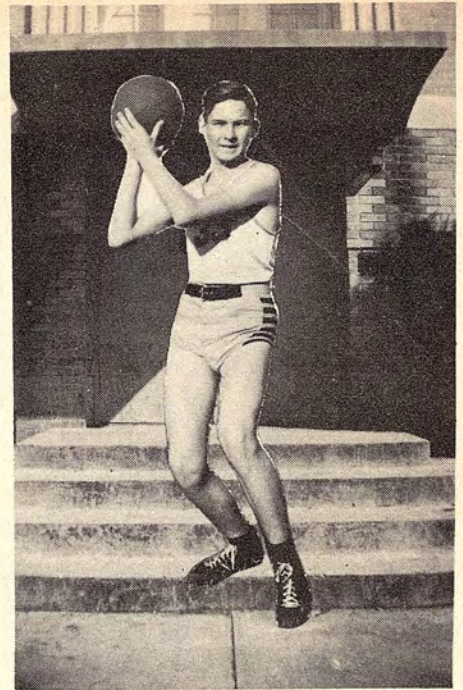




ROY LEE MULLINS  
Forward



EDDIE BURTON  
Forward



ALVA LEE HERRING  
Forward

## GARLAND OWLS' BASKETBALL RECORD 1945

December 26	Garland 35	Jesuit	38
December 27	Garland 41	*Buckner	39
January 3	Garland 23	*Grand Prairie	28
January 5	Garland 33	†Fed Oak	22
January 9	Garland 37	†Forney	25
January 10	Garland 22	†Adamson	35
January 12	Garland 17	†North Dallas	54
January 16	Garland 28	†Grand Prairie	31
January 17	Garland 32	Seagoville	19
January 19	Garland 35	Plano	28
January 23	Garland 43	*Irving	23
January 29	Garland 36	*Mesquite	23
January 30	Garland 31	*Pleasant Grove	20
February 2	Garland 44	*Carrollton	15
February 3	Garland 33	Seagoville	17
February 3	Garland 34	*Buckner	40
February 3	Garland 21	*Grand Prairie	28
February 6	Garland 23	Jesuit	34
February 7	Garland 41	*Mesquite	34
February 9	Garland 32	*Irving	27
February 12	Garland 45	†Eustice	27
February 13	Garland 52	†Pleasant Grove	48
February 16	Garland 51	†Mesquite	35
February 24	Garland 46	*Pleasant Grove	27
February 24	Garland 31	Plano	25
February 24	Garland 48	*Carrollton	13

†Tournament games  
\*Conference games





PEGGY WILLIAMS  
and  
CORKY WYNN  
Co-Captains

MARIANNA BRADY  
Coach



SQUAD

Left to right, first row: Adelle Hall, Ann Chumley, Peggy Williams, Co-Captain, Corky Wynn, Co-Captain, Dela Faye McIntire, Wanda Bowen. Second row: Dorothy Lou Hall, Bobbie Yarborough, Martha Nelson, Marita Yarborough, Wanda Jean Oliver, Bertha Hall.

worldwartwovereransoy/garland-texas

# GIRLS' BASKETBALL

The girls team which represented Garland on the hardwood this year, although it started slowly, progressed to such a degree that it defeated two of the district's best sextets to complete the season. The Owlettes swept their district encounters with Pleasant Grove, split with Buckner and Grand Prairie, and lost two each to Mesquite, Irving, and Carrollton. In the Dallas County Tournament at Carrollton, they gained fourth place in the standings, and Peggy Williams was placed on the All-County team. Adelle Hall was placed on the All-Mesquite Tournament team as a forward; and Martha Nelson, a first year guard, gained a position on the All-Seagoville Tournament team. Miss Brady, girls' coach, lettered Corky Wynn, Dorothy Hall, Ann Chumley, Wanda Oliver, Marita Yarborough, Adelle Hall, Peggy Williams, and Martha Nelson at the end of the season.

The performance of the Garland sextet in their final game against Grand Prairie was a fitting climax to their season's play. The Owlettes won this game 22-21 in the final seconds of play.

### TEAM SCORING

Garland	Opponents
Total Points	
366	450
Average Per Game	
20	25

### INDIVIDUAL SCORING

Player—	Total Points	Avg./Game	SINGLE GAME	Points
ANN CHUMLEY	116	6.44	A. Hall (Pleasant Grove)	15
ADELLE HALL	101	5.59	Williams (Mesquite)	14
PEGGY WILLIAMS	89	4.94	Chumley (Mesquite)	14
WANDA OLIVER	58	3.22	Chumley (Irving)	13
BERTHA HALL	2		Williams (Grand Prairie)	12
			A. Hall (Pleasant Grove)	11





Forward ADELLE HALL Letter 2, 3



Guard CORKY WYNN Letter 3, 4



Forward PEGGY WILLIAMS Letter 2, 3

*Garland*  
worldwartwoveterans.org/garland-texas



Guard MARITA YARBOROUGH Letter 4'



Forward ANN CHUMLEY Letter 2, 3, 4



Guard MARTHA NELSON Letter 3





DOROTHY HALL  
Guard Letter 4



WANDA OLIVER  
Forward Letter 4

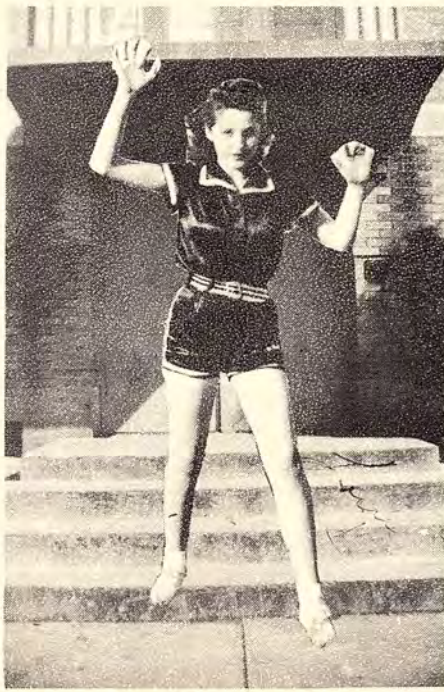


VANDA BOWEN  
Guard

*Quellets '45*  
worldwar2veterans.org/garland-texas



BERTHA HALL  
Forward



DELA MAY McINTIRE  
Guard



BOBBIE YARBOROUGH  
Forward





1945 BASKETBALL BANQUET AT THE "RIVIERA"

Left to right, sitting: Jackie Shugart, Adelle Hall, Homer Johnson, Bobbie Yarborough, Wanda Oliver, Preston Shugart, Corky Wynn, Miss Brady, Mr. Sellers, Peggy Williams, Charles Cabaniss. Standing: Boyd Hill, Jack Sealy, Bobby Griffin, Marita Yarborough, Ann Chumley, Martha Nelson.

## GARLAND OWLETTES' RECORD

January 3	Garland	12	Seagoville	32
January 5	Garland	15	Plano	22
January 9	Garland	24	*Irving	29
January 10	Garland	14	*Mesquite	27
January 12	Garland	34	*Pleasant Grove	18
January 16	Garland	13	*Carrollton	16
January 17	Garland	15	Seagoville	25
January 19	Garland	17	*Buckner	34
January 23	Garland	21	*Grand Prairie	23
January 30	Garland	16	*Mesquite	30
February 2	Garland	18	*Irving	24
February 6	Garland	27	*Pleasant Grove	12
February 8	Garland	27	†Carrollton	25
February 9	Garland	26	*Carrollton	32
February 10	Garland	19	†Mesquite	30
	Garland	24	†Buckner	34
February 13	Garland	22	*Buckner	16
February 16	Garland	22	*Grand Prairie	21

†Tournament games

\*Conference games



# SCHOOL EVENTS CALENDAR

September 7, 8, 1944	Registration of Students.
September 11, 1944	Opening of School.
September 13, 1944	Senior Class Open House at Jim Gregory's Home.
September 15, 1944	Owls open Football Season. Garland vs. Van Alstyne.
September 18, 1944	Senior Class completes organization.
September 18, 1944	Band elects officers.
September 21, 1944	Spanish Club, "El Espiritu Espanol," organized.
September 21, 1944	Junior "Better English Clubs" organized.
September 22, 1944	First Edition of "High Hoots."
September 22, 1944	Annual Staff announced.
September 22, 1944	Majorities and Flag Bearers elected.
September 22, 1944	Seniors sponsor Dance in Gym.
September 25, 1944	Spanish Club, "Los Mochuelos," organized.
September 26, 1944	"High Hoots" and "Owl Eye" staffs announced.
September 27, 1944	Cheer Leaders announced.
September 29, 1944	Sophomores elect officers.
September 29, 1944	Garland vs. Plano.
September 29, 1944	Sophomores sponsor Dance in Gym.
October 2, 1944	Senior Room Mothers elected.
October 3, 1944	Juniors and Freshmen elect officers.
October 3, 1944	Library receives new books.
October 4, 1944	Science Clubs organized.
October 4, 1944	Senior Assembly Program.
October 4, 1944	Open House at Stone-Brady-Lee Home.
October 6, 1944	Garland vs. Pleasant Grove.
October 6, 1944	Freshmen sponsor Dance in Gym.
October 10, 1944	Parent Teacher Association starts drive.
October 10, 1944	Future Farmers of America elect officers.
October 13, 1944	Garland vs. Mesquite.
October 16, 1944	"Annual Drive" opens.
October 17, 1944	P. T. A. honors Faculty with Tea.
October 17, 1944	Seniors sponsor Christmas Card Sale.
October 20, 1944	End of First Six Weeks.
October 20, 1944	Garland vs. Kaufman.
Oct. 23-27, 1944	High School helps farmers pick cotton.
October 24, 1944	Reception for Faculty. Mrs. Aust, hostess.
October 27, 1944	Garland vs. Irving.
October 30, 1944	F. F. A. Sweetheart elected.
October 30, 1944	Sophomore "English Clubs" organized.
October 31, 1944	Halloween Party in Gym.
November 3, 1944	Garland vs. Decatur.
November 3, 1944	P. T. A. sponsors Dance in Gym.
November 8, 1944	Horizon Club organized.
November 9, 1944	"Los Companelos Club" organized.
November 10, 1944	Junior Class Armistice Day Program and Band Concert. Juniors crown "Cotton King and Cotton Queen." Lt. Colonel John J. Deane addresses student body.
November 10, 1944	Garland vs. Grand Prairie.
November 10, 1944	Juniors sponsor Dance in Gym.
November 13, 1944	Red Cross Drive.
November 15, 1944	F. F. A. Boys attend Hereford Show.
November 17, 1944	School Christmas Cards arrive.
November 21, 1944	Science Clubs organized.
November 22, 1944	Girls' Basketball Practice started.
November 23-24, 1944	Thanksgiving Holidays.
November 24, 1944	Garland vs. Carrollton.

worldwarivovetans.org/garland-texas



# SCHOOL EVENTS CALENDAR

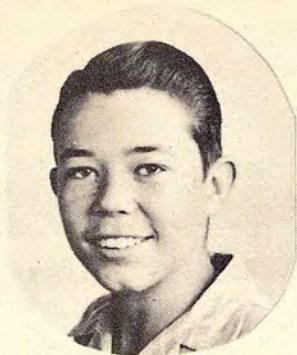
November 27, 1944	Senior Rings arrived.
November 27, 1944	Home Economics Club organized.
December 1, 1944	End of Second Six Weeks.
December 4, 1944	Commercial Clubs organized.
December 8, 1944	Garland defeats Royse City for Bi-District.
December 9-17, 1944	Harris Hill attends 4-H Club Convention in Chicago.
December 13, 1944	English Club Party. Mrs. Whorton, sponsor.
December 14, 1944	Spanish Clubs' Christmas Party.
December 15, 1944	Regional Game with Nocona.
December 15, 1944	Regional-Game Dance in Gym, sponsored by Seniors.
December 19, 1944	Christmas Pageant in Gym.
December 22, 1944	Sophomore Assembly Program.
Dec. 22-Jan. 2	Christmas Holidays.
Dec. 26-27, 1944	Owls attend Dal-Hi Tournament.
January 3, 1945	Owls vs. Seagoville (Basketball).
January 5, 1945	Freshman Assembly Program.
January 17, 1945	Second Semester Begins.
January 19, 1945	Owls vs. Buckner (Basketball).
January 22, 1945	"Trig" and Civics classes begin.
January 23, 1945	Owls vs. Grand Prairie (Basketball).
January 29, 1945	Owls vs. Jesuit (Basketball).
January 31, 1945	Reverend Franklin M. Segler speaks to students in Auditorium.
February 2, 1945	Community Health Class organized.
February 6, 1945	Owls vs. Pleasant Grove (Basketball).
February 7, 1945	Students attend movie, "Wilson."
February 8, 1945	Owls vs. Irving (Basketball).
February 9, 1945	Carrollton Basketball Tournament (Girls).
February 9, 1945	P. T. A. Dance in Gym.
February 10, 1945	Owls victorious at Seagoville Basketball Tournament.
February 28, 1945	Reverend W. D. Craig addresses student body.
March 2, 1945	End of Fourth Six Weeks.
March 5, 1945	Juniors select Class Rings for 1945-46.
March 6, 1945	Red Cross Drive.
March 9, 1945	County Health Nurses begin Vaccination.
March 9, 1945	Chris Daugherty wins honors at Ft. Worth Live Stock Show.
March 13, 1945	Band Party.
March 16, 1945	Banquet at Riviera honoring Basketball Boys and Girls.
March 27, 1945	Mr. Greenshaw presents Band in Concert.
	Ex-Convict speaks.
March 28, 1945	Reverend R. C. Moore addresses student body.
March 30, 1945	Easter Edition of "High Hoots."
March 30, 1945	Senior Play.
April 9, 1945	Lions Club Minstrel.
April 12, 1945	Senior Class Banquet given by Ladies of Baptist Church.
April 13, 1945	End of Fifth Six Weeks.
April 14, 1945	F. F. A. Live Stock Show.
April 25, 1945	Reverend Chester P. Karrick address student body.
April 27, 1945	Junior-Senior Prom.
May 2, 1945	Dallas County Music Festival at Carrollton.
May 3, 1945	Junior One-Act Play, "Antic Spring."
May 4, 1945	Senior Day.
May 8, 1945	Future Farmers' Father and Son Banquet.
May 16, 1945	Reverend Wayne Sullivan addresses student body.
May 18, 1945	Final Edition of "High Hoots."
May 25, 1945	End of Sixth Six Weeks. (END OF SCHOOL YEAR.)
May 27, 1945	Baccalaureate Service.
May 28, 1945	Commencement.

worldwarveterans.org/garland-texas



# ANTIC SPRING

By Robert Nail



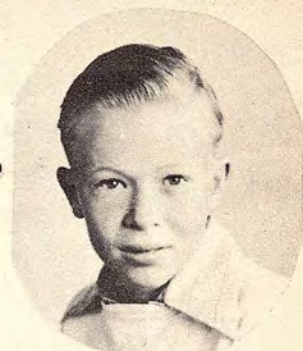
J

Jackie Shugart



R.

Wanda Thomas

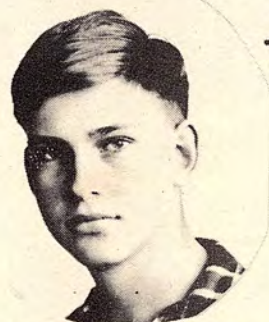


Carl Dickson



PL

Peggy Williams



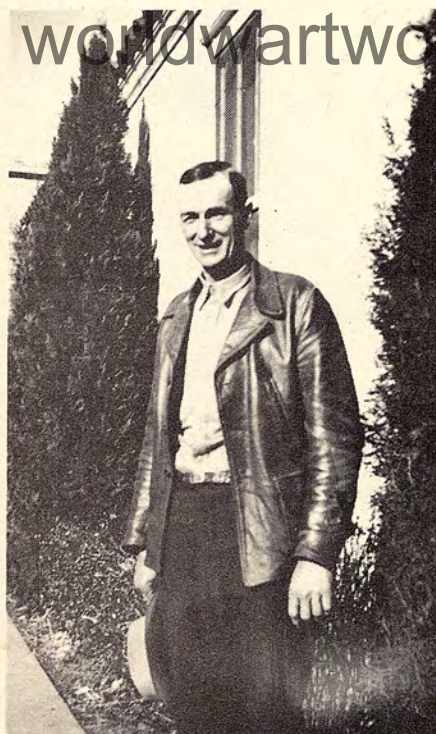
AY

Jimmy Butcher



Peggy Bright

[www.artwoveterans.org/garland-texas](http://www.artwoveterans.org/garland-texas)



Hamer Bane  
BUILDING CUSTODIAN



John Hall and Arden Paul  
FLAG RAISERS



Charles Lyles  
BUILDING CUSTODIAN







## SCHOOL SONG

Here's to Garland High School  
She's tried and true,  
Gladly we'll back her,  
In what she may do!—  
Rah, Rah, Rah!  
See the foe is trembling  
Trembling with fear,  
Push, pull for Garland

[worldwartwoveterans.org/garland-texas](http://worldwartwoveterans.org/garland-texas)







## ''END OF THE TRAIL'' [worldwartwoveterans.org/garland-texas](http://worldwartwoveterans.org/garland-texas)

To those underclassmen who have passed another milestone, yet may still see the "end of the trail" only as a distant and beckoning landmark, we hasten to give a little advice. Strive to improve upon our record on the trail, for only in this way will you be prepared for and merit that life which will open for you in the years to follow.

We wish to express our appreciation to all of those who have aided us so greatly in preparing this annual: C. E. Sutherland of Rembrand Studios, Garland; N. V. Goodwin of Dallas; The Fox Company of San Antonio; our publishers, The Taylor Engraving Corporation of Dallas; our patrons and advertisers; and the Senior Class and Faculty of Garland High School.



[worldwartwoveterans.org/garland-texas](http://worldwartwoveterans.org/garland-texas)

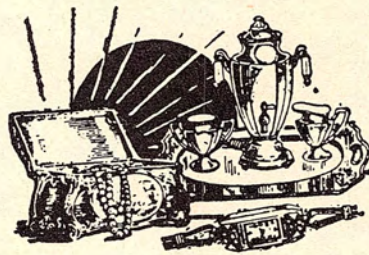


[worldwartwoveterans.org/garland-texas](http://worldwartwoveterans.org/garland-texas)

*Our  
Advertisers*



JEWELRY IS ALWAYS  
THE PERFECT GIFT



[worldwartwoveterans.org/garland-texas](http://worldwartwoveterans.org/garland-texas)

**Wilhoit's**  
JEWELERS

Located at Payne's Drug Store



DRINK  
*Coca-Cola*

ALWAYS ON  
THE  
REFRESHING  
SIDE

worldwariveterans.org/garland-texas

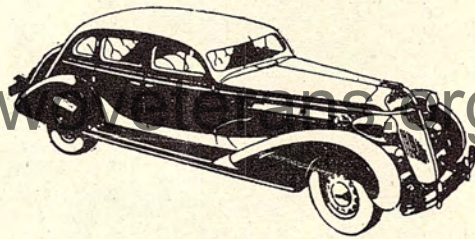




# SHUGART'S

SERVICE STATION

Goodrich Tires and Accessories



worldwartw...rg/garland-texas

SINCLAIR PRODUCTS

CHASSIS LUBRICATION  
&  
WASHING

GARLAND, TEXAS



THE BEST SANDWICHES

THE BEST SERVICE

at

SCOTT'S

[worldwartwoveterans.org/garland-texas](http://worldwartwoveterans.org/garland-texas)

Sandwich Shop

OPEN DAY *and* NIGHT

Phone-4425





GOOD FOOD MEANS  
GOOD HEALTH

GOOD HEALTH MEANS  
HAPPINESS

[worldwartwoveterans.org/garland-texas](http://worldwartwoveterans.org/garland-texas)

EAT AT  
NICK'S

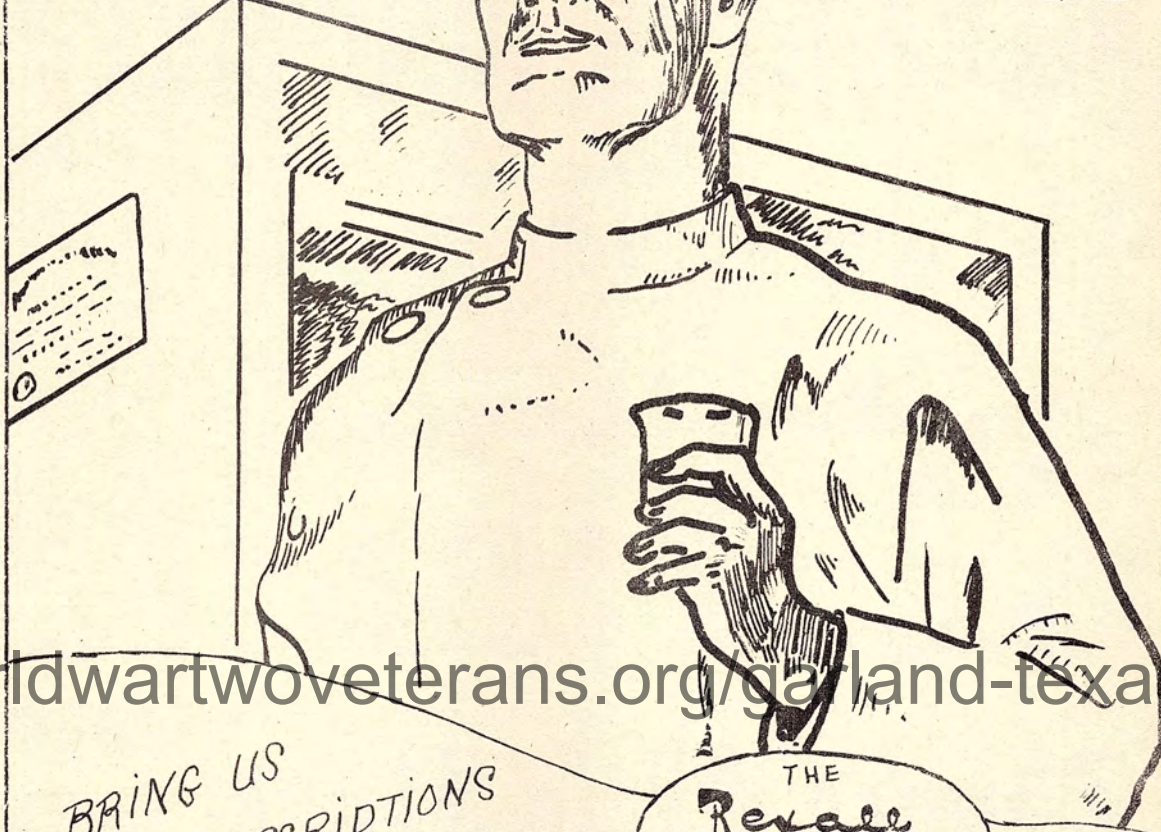
REDECORATED -

HIGHWAY 67

GARLAND, TEXAS

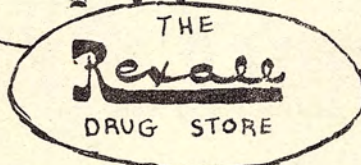


# McKNIGHT'S



[worldwartwoveterans.org/garland-texas](http://worldwartwoveterans.org/garland-texas)

BRING US  
YOUR PRESCRIPTIONS



ALL THE NEWEST  
SULFA DRUGS

# PRESCRIPTION - DEPARTMENT



Established in 1909

# ALEXANDER'S INSURANCE

AGENCY

"INSURANCE IN ALL IT'S PHASES"

*Nancy Alexander*

PHONE-4805

[worldwartwoveterans.org/garland-texas](http://worldwartwoveterans.org/garland-texas)

## Payne's Drug Store

— WHERE YOU RECEIVE

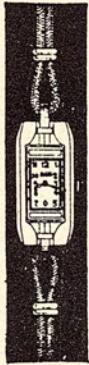
"Fin I"

FOUNTAIN SERVICE, PRESCRIPTIONS,  
TRANSPORTATION.



YOUR TIME IS MY BUSINESS

JEWELERS  
**Vaughan's**  
WATCHMAKERS



*Watch Repairs*

[worldwartwoveterans.org/garland-texas](http://worldwartwoveterans.org/garland-texas)



**ROMAN FALTEJSEK**



A LOVELY CORSAGE OR CUT  
FLOWERS ARRANGED IN A BOUQUET  
WILL EXPRESS YOUR SENTIMENTS  
BEAUTIFULLY.

*Order now! Call FZ-0982 Dallas.*

Florist *and* Nursery

Garland Road



Compliments of



City Shoe Shop

Garland, Texas

FEED

SEED

ROACH

FEED STORE

Your business  
is appreciated

[worldwartwoveterans.org/garland-texas](http://worldwartwoveterans.org/garland-texas)

Garland & Plaza  
THEATERS

ALWAYS A GOOD SHOW

MR. <sup>and</sup> MRS. H.R. BISBY



Quality Baby Chicks



**BULLARD'S**  
HATCHERY

Compliments  
of

Dr. and Mrs.  
E. R. CRENSHAW

[worldwartwoveterans.org/garland-texas](http://worldwartwoveterans.org/garland-texas)

GOOD MERCHANDISE AT THE RIGHT PRICE

*Trade where your trade is appreciated.*

**W. W. JONES**

HARDWARE *and* FURNITURE CO.

SINCE 1899

Phone 2355



Compliments  
of

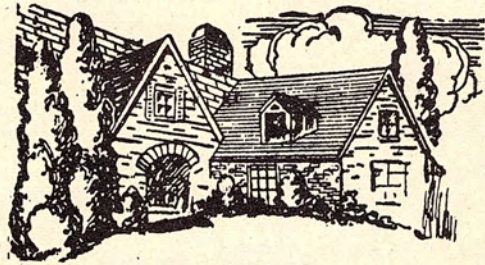
CROSSMAN'S

Insurance

Agency

Curtis Crossman  
Dixie Crossman

Everything to build with



Southland

LUMBER COMPANY

J.F. Ward, Manager

Phone 87-0833 Rt. 4, Dallas

[worldwartwoveterans.org/garland-texas](http://worldwartwoveterans.org/garland-texas)

## BOWEN RADIO SERVICE

DAY PHONE 3645

NITE PHONE 4941

519 STATE ST.  
GARLAND, TEXAS

COMPLETE SERVICE ON ALL  
HOUSEHOLD AND AUTOMOTIVE  
RADIOS

All services and parts guaranteed



STATE NATIONAL BANK  
OF GARLAND

TOTAL RESOURCES OVER

\$4,750,000.00

MEMBER F.D.J.C.

[worldwartwoveterans.org/garland-texas](http://worldwartwoveterans.org/garland-texas)

ZERO LOCKERS

GARLAND  
CREAMERY

HOME ICE  
COMPANY

*Phone 3215*



**GRUBB'S**

*cleaners*

608 BANKHEAD

Garland, Texas

*phone 1405*

**GOUGH**

**BROS.**

ELECTRIC SUPPLIES

AND

LIGHT FIXTURES

*Phone 1415*

*Congratulations  
to the*

**OWLS**

*for being the  
two time winners of the*  
**REGIONAL CHAMP.**

1943<sup>nd</sup> 1944

REMBRANDT STUDIO

C. E. SUTHERLAND, OWNER

GARLAND, TEXAS

**LYLES'**

**READY TO WEAR**

*Infant's  
and  
children's  
apparel*

**MORE FOR LESS**

*NORTH-EAST CORNER OF THE SQUARE*



*Congratulations*  
*to the*  
**1945**  
**OWI'S NEST**

C.R. LYLES  
Real Estate Agency

**POWELL**  
**MERCANTILE CO.**

*"The  
Store  
of Steady  
Service."*

**Phone**  
2225

**BAKER  
HARDWARE**



*Phone 5535*

*Telestern Auto  
ASSOCIATE STORE*

*Garland, Texas*

Auto Parts  
Work Clothing      Socks  
Sport Jackets  
Dress Shirts      Raincoats  
Tires  
Gloves      Batteries



*Congratulations*

*To an energetic  
and resourceful  
Annual Staff who  
believe in giving  
the public only the  
best.*

**MILADY'S SHOP**

*Mrs. R. D. Murphree*

**COLE <sup>and</sup> DAVIS**

IN GARLAND

SINCE

**1895 -**

dry goods  
clothing

[worldwartwoveterans.org/garland-texas](http://worldwartwoveterans.org/garland-texas)

**GREENE'S**

BARBER SHOP

*the best place to  
trade after all.*

ROBERT GREENE

PHONE - 3145

**NICHOL**

**SON'S**

VARIETY STORE

*"THE PLACE WHERE YOU*

GET THE MOST CHANGE

*BACK."*



McDONNELL'S  
BARBER & BEAUTY  
SHOP

*"We need your head  
in our business"*

PHONE-5215

95  
CLEANERS

CLEANING, PRESSING  
*and*  
ALTERATIONS

Phone-5555

[worldwartwoveterans.org/garland-texas](http://worldwartwoveterans.org/garland-texas)

BEVILLY'S

GROCERY  
AND  
MARKET -

Phone-3485

Johnny  
Nicholson

Lee  
Bexley

Mitchell Goodwin  
LUMBER COMPANY

*The best lumber  
at the*

*lowest cost!*

H.A. MANZER



Compliments  
of

R.W. PHILLIPS

MGR.



GARLAND  
FLOWER  
SHOP

117 N. EIGHTH ST.

Garland, Texas

MRS. ALTON HALL

Phone - 2175

[worldwartwoveterans.org/garland-texas](http://worldwartwoveterans.org/garland-texas)

VISIT ~

**Joe T. Wood**  
**Motor Co.**  
**Store**

MANY BARGAINS IN  
ELECTRICAL ITEMS

Parts for all types of cars

Good mechanics ready to serve U

**FREEMAN'S**

Food Store

A GOOD

PLACE TO TRADE

North side of the square



*Congratulations  
to the  
Class of '45  
from*

**W.F. Wiseman**

Mobile  
oil



Mobile  
gas

Phone -1725

**WHITEWAY  
SERVICE -  
STATION**

*805 BANKHEAD*

*Garland, Tex.*

Phone - 2015

[worldwartwoveterans.org/garland-texas](http://worldwartwoveterans.org/garland-texas)

**DARNELL'S**

**CLEANERS AND HATTERS**

Our Cleaning  
makes the  
Garments  
Look Like  
New

**Pho. 4165**

**BILLINGSLEY  
&  
COOPER**

Grocery & Market

*Fancy Groceries  
Good Meat*

1235





# CHEVROLET GARAGE

W.H. McCallum

Parts and service

PHONE-2667

*Congratulations  
to the  
1945*

Graduating class  
of the

Garland High School

TEXAS TELEPHONE CO.



MAGNOLIA PRODUCTS

# J. T. Wood

Phone-3295

# BEST WISHES

to the  
1945

"Owls Nest"

Jack Grissom

Mgr. of Safeway Co.

J-80298

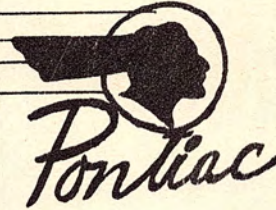
[worldwartwoveterans.org/garland-texas](http://worldwartwoveterans.org/garland-texas)



DANIEL & YARBOROUGH

Telephone-4655

620 Bankhead



## OWL CAFE

*Family Style Meals*

11:30 to 1:00

MRS. J. FRANK WILSON OWNER

[worldwartwoveterans.org/garland-texas](http://worldwartwoveterans.org/garland-texas)



Phone-1735

E.C. Robertson

E.W. Hutson

*Compliments of*

*A. D. Jackson, Jr.*

INSURANCE OF ALL KINDS



[worldwartwoveterans.org/garland-texas](http://worldwartwoveterans.org/garland-texas)



[worldwartwoveterans.org/garland-texas](http://worldwartwoveterans.org/garland-texas)

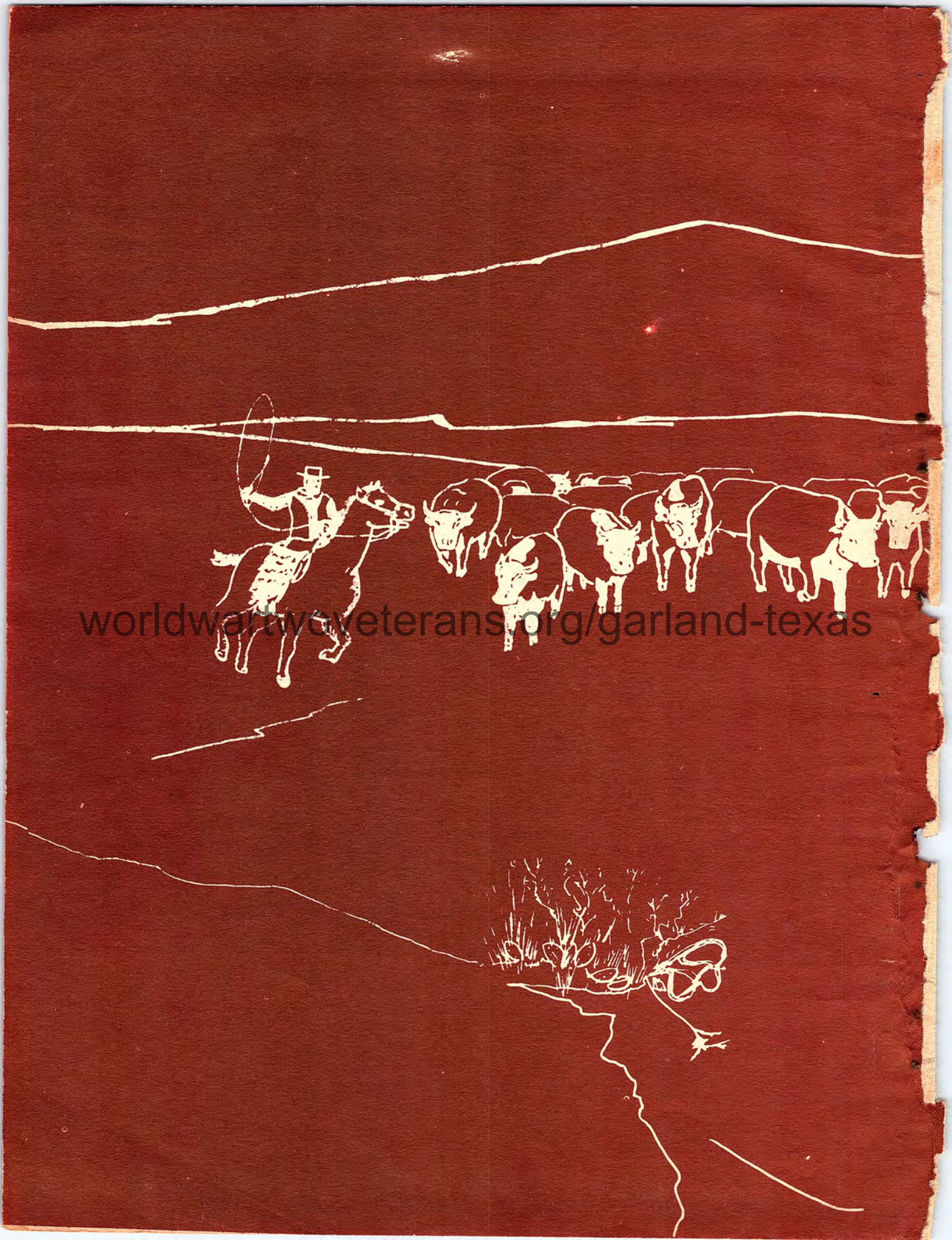


[worldwartwoveterans.org/garland-texas](http://worldwartwoveterans.org/garland-texas)



[worldwartwoveterans.org/garland-texas](http://worldwartwoveterans.org/garland-texas)





[worldwartwoveterans.org/garland-texas](http://worldwartwoveterans.org/garland-texas)



4  
0400



[worldwartwoveterans.org/garland-texas](http://worldwartwoveterans.org/garland-texas)



MAURER & CO.  
LITHOGRAPHERS  
NEW YORK